

*Filed  
of \$15 Plan 1-3-96*

*P295*

ROAD DOCKET NO. 01-96

TOWNSHIP OF CAMBRIA  
CAMBRIA COUNTY  
PENNSYLVANIA

ORDINANCE NO. 1995 - 145

AN ORDINANCE LAYING OUT, OPENING, WIDENING,  
ADOPTING AND ACCEPTING AS A PUBLIC ROAD  
A CERTAIN ROAD LOCATED IN THE  
CAMBRIA COUNTY INDUSTRIAL PARK, TOWNSHIP OF  
CAMBRIA, CAMBRIA COUNTY, PENNSYLVANIA

WHEREAS, the Board of Supervisors of the Township of Cambria has received request from the Cambria County Industrial Development Corporation to open, lay out, accept and adopt as a public road a certain road to be known as Casale Court, located in the Cambria County Industrial Park, Cambria Township, Cambria County, Pennsylvania; and,

WHEREAS, the Board of Supervisors of the Township of Cambria pursuant to the Second Class Township Code (53 P.S. 66101) has determined that it is necessary that the Township of Cambria formally open, lay out, accept and adopt as a public road, the aforesaid road located in the Cambria County Industrial Park, Township of Cambria, Cambria County, Pennsylvania; and,

WHEREAS, the Board of Supervisors of the Township of Cambria desires that the aforesaid road to be opened, laid out, accepted and adopted as a public road, be known and designated as Casale Court.

NOW, THEREFORE, it is hereby ORDAINED AND ENACTED by the Board of Supervisors of the Township of Cambria, on behalf of the Township of Cambria, as follows:

JUN 3 12 02 PM '96

CAMBRIA COUNTY  
CLERK OF COURTS  
FILED

SECTION 1: A road (which is hereinafter generally described) to be known as Casale Court is hereby laid out, opened, widened, adopted and accepted as a public road of the Township of Cambria.

SECTION 2: The aforesaid road which, as aforesaid, is being designated and named Casale Court and which is being laid out, opened, widened, adopted and accepted as a public road, is generally described as follows:

ALL that certain piece or parcel of land situate in the Township of Cambria, County of Cambria, and Commonwealth of Pennsylvania, being more particularly bounded and described as follows:

BEGINNING at a point on the westerly right-of-way line of 100-foot wide Industrial Park Road, said point being the northeastern corner of Lot 15B and the southeastern corner of cul-de-sac herein described; thence along said Lot 15B, the following courses and distances:

South 89 degrees 58 minutes 39 seconds West 267.66 feet to a point,

along a curve to the left having a radius of 25.00 feet and an arc length of 26.86 feet to a point, and

along a curve to the right having a radius of 80.00 feet and an arc length of 85.96 feet to a point at the northeastern corner of Lot 15;

thence along said Lot 15, the following courses and distances:

along a curve to the right having a radius of 80.00 feet and an arc length of 89.44 feet to a point,

South 89 degrees 58 minutes 39 seconds West 58.06 feet to a point, and

North 00 degrees 01 minutes 21 seconds West 60.80 feet to a point at the southern corner of Lot 15A;

thence along said Lot 15A, the following courses and distances:

North 00 degrees 01 minutes 21 seconds West 9.20 feet to a point,

North 89 degrees 58 minutes 39 seconds East 58.06 feet to a point,

along a curve to the right having a radius of 80.00 feet and an arc length of 175.40 feet to a point,

along a curve to the left having a radius of 25.00 feet and an arc length of 26.86 feet to a point, and

North 89 degrees 58 minutes 39 seconds East 6.49 feet to a point at the southwestern corner of Lot 14B;

thence along said Lot 14B, North 89 degrees 58 minutes 39 seconds East 261.18 feet to a point on the westerly right-of-way line of Industrial Park Road; thence along said right-of-way line, South 00 degrees 01 minutes 21 seconds East 50.00 feet to a point and place of beginning. Containing 0.871 acres.

This description given in accordance with Sheet 5 of 9 of Plan of Lots from the Cambria County Industrial Park prepared by L. Robert Kimball & Associates, Inc. of Ebensburg, Pennsylvania, dated January 1987, and last revised December 17, 1993.

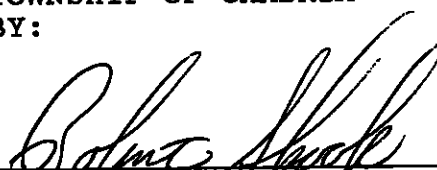
(The aforesaid road shall have a width/right-of-way of forty (40) feet.)

SECTION 3: The Board of Supervisors of the Township of Cambria hereby authorizes appropriate officials and employees of the Township to post signs on the aforesaid road indicating the name of the said road as herein given.

SECTION 4: The Secretary of the Township of Cambria is directed to file a copy of this Ordinance together with a copy of the sketch/draft of the road with the office of the Clerk of Courts of Cambria County, Pennsylvania, and with the appropriate officials of the Commonwealth of Pennsylvania.

ENACTED AND ORDAINED by the Board of Supervisors of the Township of Cambria, Cambria County, Pennsylvania, this 27<sup>th</sup> day of December, 1995.

TOWNSHIP OF CAMBRIA  
BY:

  
\_\_\_\_\_  
Robert Shook, Chairman of The Board  
Of Supervisors


  
\_\_\_\_\_  
David Hoover, Supervisor

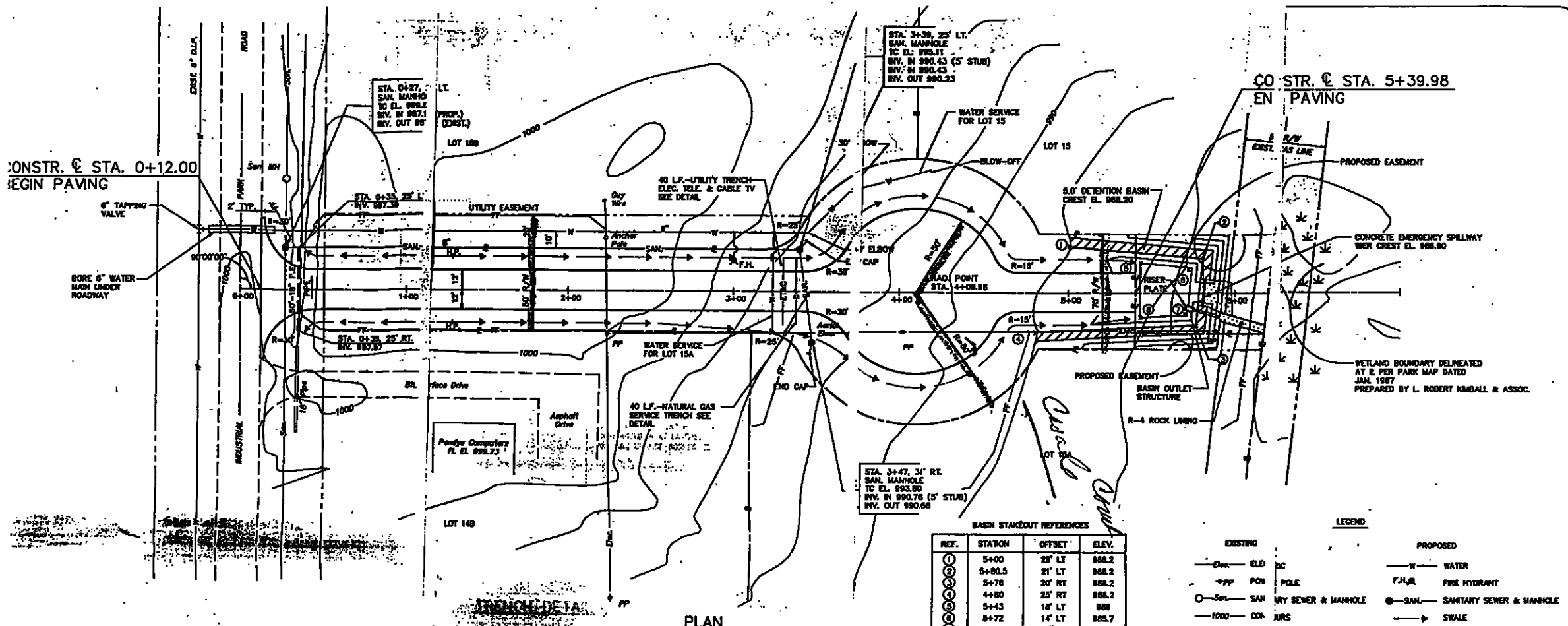
  
\_\_\_\_\_  
Fred Sauger, Supervisor

ATTEST:

  
\_\_\_\_\_  
(SECRETARY)

I hereby certify this to to be a true and exact copy of Ordinance No. 145, an ordinance laying out, opening, widening, adopting and accepting as a public road a certain road located in the Cambria County Industrial Park, known as Casale Court. Adopted at the Board of Supervisors of Cambria Township, Cambria County, on Wednesday, December 27, 1995 at 6:00 p.m.

  
\_\_\_\_\_  
Norma Zimmerman  
Secretary-Treasurer



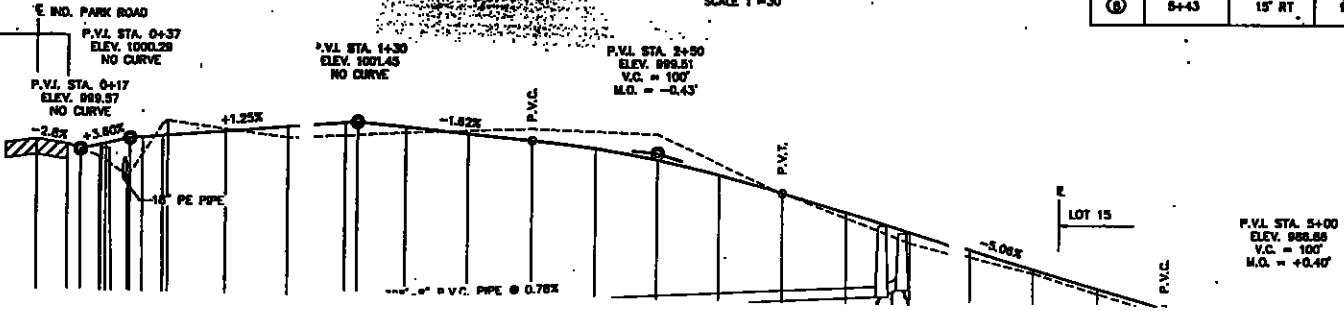
PLAN  
SCALE 1"=30'

BASIN STAKEOUT REFERENCES

REF.	STATION	OFFSET	ELEV.
①	5+00	28' LT	988.2
②	5+80.5	21' LT	988.2
③	5+78	20' RT	988.2
④	4+80	25' RT	988.2
⑤	5+43	18' LT	988
⑥	5+72	14' LT	985.7
⑦	5+89	15' RT	985.55
⑧	5+43	15' RT	986

- LEGEND
- |                           |                    |                            |
|---------------------------|--------------------|----------------------------|
| EXIST. ELD                | EXIST. AS LINE     | PROPOSED WATER             |
| PROPOSED POLE             | PROPOSED F.H.R.    | PROPOSED SAN. S.W. & M.H.  |
| PROPOSED SAN. S.W. & M.H. | PROPOSED SWALE     | PROPOSED H.P.              |
| PROPOSED UTL. LINE        | PROPOSED H.P.      | PROPOSED 18" FILTER FABRIC |
| PROPOSED UTL. LINE        | PROPOSED UTL. LINE |                            |

START PAVING  
STA. 0+12.00



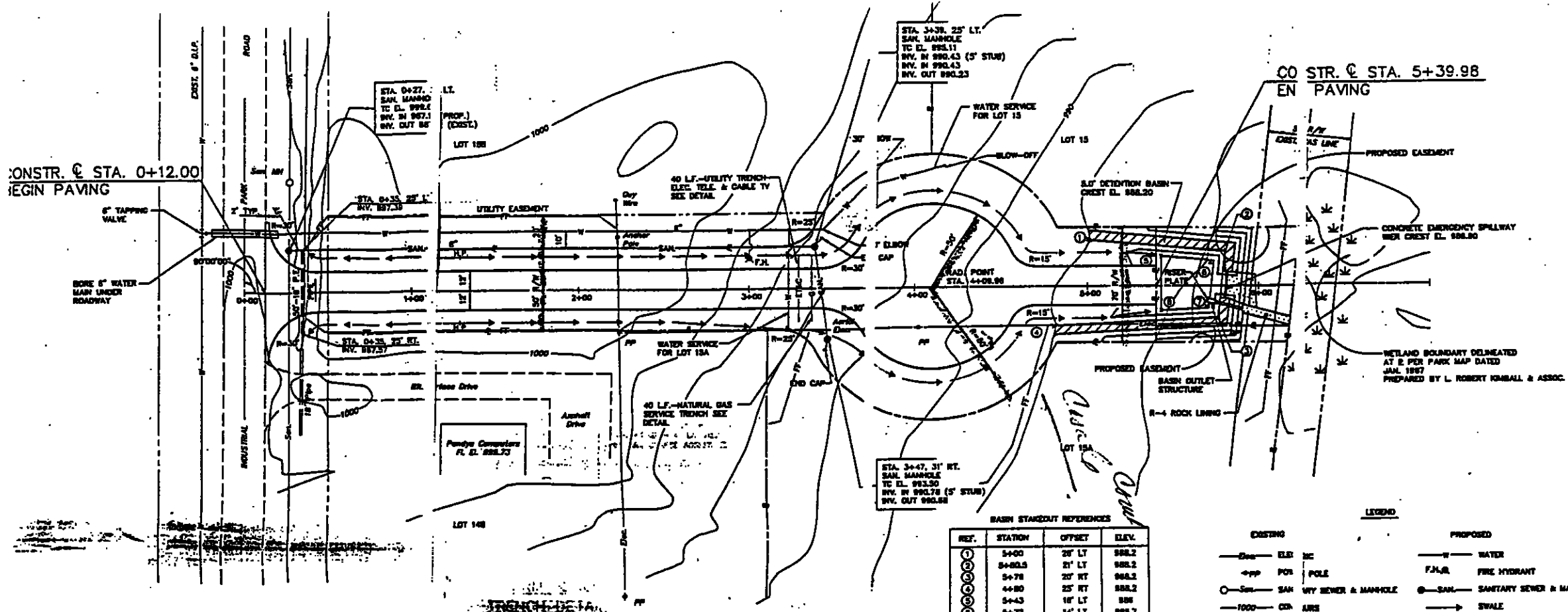
END PAVING  
STA. 5+39.98



**EGIN ENGINEERS**  
 418 MAIN STREET, SUITE 101, JOHNSTOWN, PA 17031  
 (810) 538-8728  
 FAX (810) 538-8728

CAMBRIA COUNTY INDUSTRIAL PARK  
 ROADWAY EXTENSION  
 CAMBRIA TOWNSHIP, CAMBRIA COUNTY, PA  
 FOR: CAMBRIA COUNTY INDUSTRIAL DEVELOPMENT CORP.  
 PO BOX 94, EBERSBURG, PA 17033

PROJECT NO. 93-225



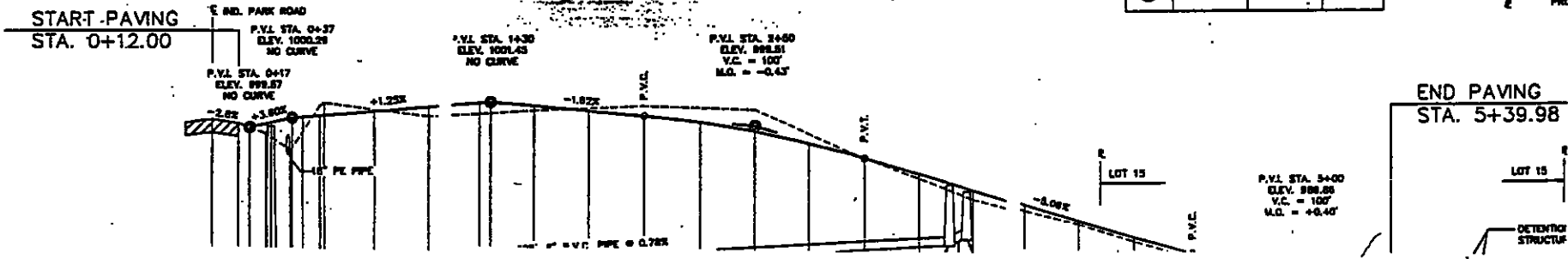
PLAN  
SCALE 1"=30'

BASIN STAKEOUT REFERENCES

REF.	STATION	OFFSET	ELEV.
1	5+00	25' LT	988.2
2	5+00.5	21' LT	988.2
3	5+78	20' RT	988.2
4	4+80	25' RT	988.2
5	5+43	16' LT	888
6	5+72	14' LT	888.7
7	5+68	13' RT	985.55
8	5+43	15' RT	888

LEGEND

EXISTING		PROPOSED	
—	ELE. ME	—	WATER
+	POI	F.H.M.	FIRE HYDRANT
○	SAN WY SEWER & MANHOLE	○	SAN. SANITARY SEWER & MANHOLE
—	CON. LINE	→	SWALE
—	WAT. LINE	H.P.	HIGH POINT
—	PRK. CITY LINE	—	16" FILTER FABRIC



CONSTR. @ STA. 0+12.00  
BEGIN PAVING

CONSTR. @ STA. 5+39.98  
END PAVING

8" TAPPING VALVE

8" BORE 6" WATER MAIN UNDER ROADWAY

STA. 0+27, 25' LT. SAN. MANHOLE  
 TC EL. 988.11  
 INV. IN 987.1  
 INV. OUT 88'

STA. 3+38, 25' LT. SAN. MANHOLE  
 TC EL. 985.11  
 INV. IN 980.43 (5" STUB)  
 INV. IN 980.43  
 INV. OUT 980.23

STA. 3+47, 31' RT. SAN. MANHOLE  
 TC EL. 983.50  
 INV. IN 983.78 (5" STUB)  
 INV. OUT 982.58

40 LF. UTILITY TRENCH  
 ELEC. TELE. & CABLE TV  
 SEE DETAIL

40 LF. NATURAL GAS SERVICE TRENCH  
 SEE DETAIL

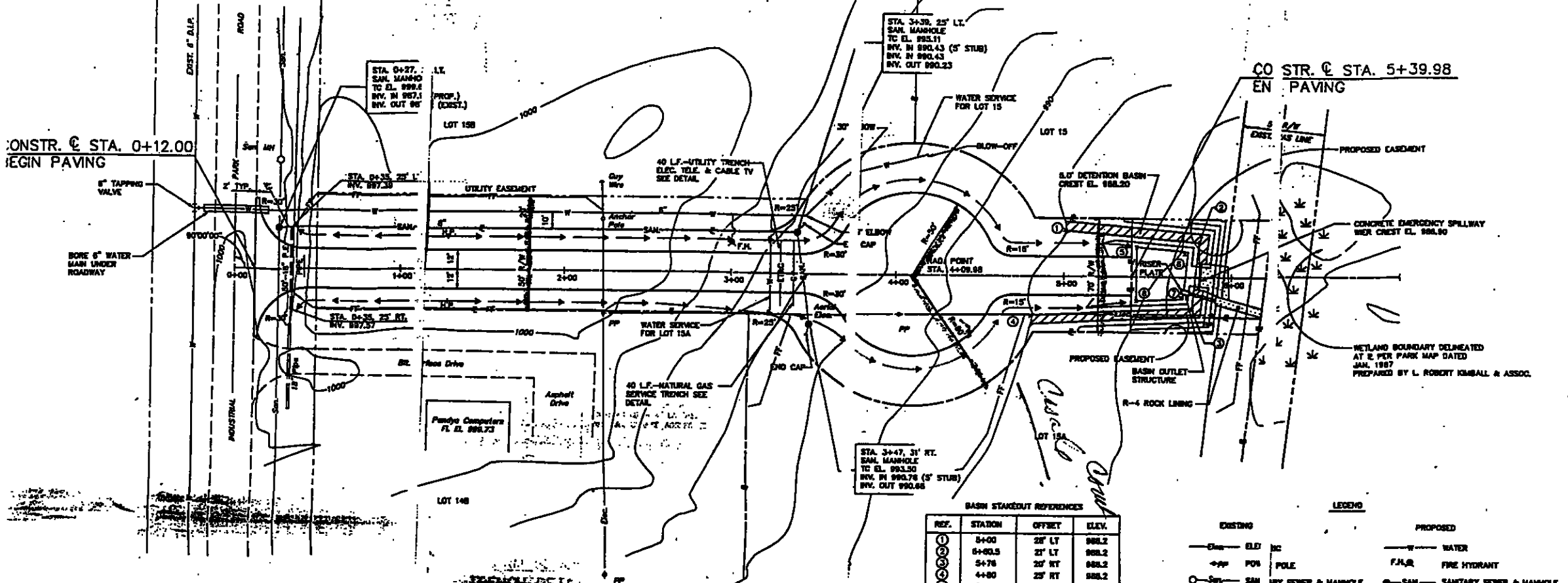
517' DETENTION BASIN  
 CREST EL. 988.20

CONCRETE EMERGENCY SPILLWAY  
 MAX. CREST EL. 988.80

WETLAND BOUNDARY DELINEATED AT E PER PARK MAP DATED JAN. 1987  
 PREPARED BY L. ROBERT KIMBALL & ASSOC.

CONSTR. @ STA. 0+12.00  
BEGIN PAVING

CONSTR. @ STA. 5+39.98  
END PAVING

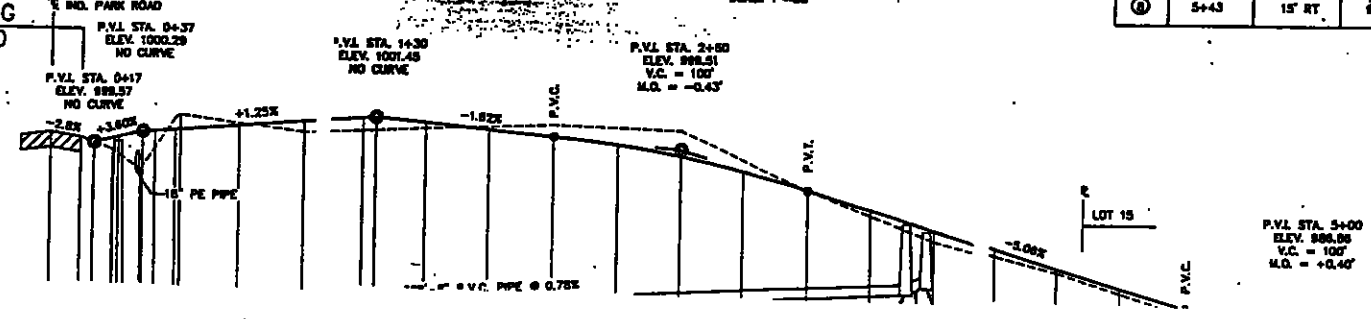


BASIN STAKEOUT REFERENCES

REF.	STATION	OFFSET	ELEV.
①	5+00	20' LT	988.2
②	5+00.5	27' LT	988.2
③	5+76	20' RT	988.2
④	4+80	25' RT	988.2
⑤	5+43	18' LT	988
⑥	5+72	14' RT	985.7
⑦	5+89	13' RT	983.55
⑧	5+43	15' RT	988

LEGEND

EXISTING		PROPOSED	
—	ELV. IN	—	WATER
+	POB. POLE	F.H.R.	FIRE HYDRANT
○	SAN. MRY SEWER & MANHOLE	○	SAN. SANITARY SEWER & MANHOLE
—	CON. CURB	—	SWALE
—	WAT. LINE	H.P.	HIGH POINT
—	PRK. DUTY LINE	—	15" FILTER FABRIC



ESS. PG. 27-33  
FIELD BOOK, 2

NORTH

**EGIN ENGINEERS**

418 MARK STREET, SUITE 100, SCHWARTZ, PA. 18801  
(610) 538-1754 FAX (610) 538-1756

CAMBERIA COUNTY INDUSTRIAL PARK  
ROADWAY EXTENSION  
FOR  
CAMBERIA COUNTY INDUSTRIAL DEVELOPMENT CORP.  
CAMBERIA TOWNSHIP, CAMBERIA COUNTY, PA.  
PO BOX 84, EBERSBURG, PA. 18833

PROJECT NO. 93-225