

CAMBRIA COUNTY
PENNSYLVANIA

Road Docket #03-1989
3-29-89: \$15.00 filing fee paid.

RESOLUTION NO. # 235

WHEREAS, Northern Forests II, Inc., a closed corporation, of 600 Green Street, Smethport, McKean County, Pennsylvania, and Sylvan Glen, Inc., a closed corporation, of Gaines, Tioga County, Pennsylvania, have offered for dedication of a road, a certain piece/parcel of land to be utilized as a public road for the subdivision known as Pindleton Ridge; and,

WHEREAS, the Owners of such land have furnished, together with the Deed, a survey or map of the road and, in addition, have posted a bond and/or installed the required improvements; and,

WHEREAS, the Board of Supervisors of the Township of Cambria is in agreement to accept said parcel/tract of land as a public road to be maintained by public funds in the future.

NOW, THEREFORE, BE IT RESOLVED AND IT IS HEREBY RESOLVED, by the Board of Supervisors of the Township of Cambria and on behalf of said Township, that:

(1). The Deed of Northern Forests II, Inc., a closed corporation, and Sylvan Glen, Inc., a closed corporation, conveying certain lands to the Board of Supervisors of Cambria Township, Cambria County, Pennsylvania, is hereby accepted as a deed of dedication for road purposes on behalf of the said Township.

(2). The parcel of land offered for dedication as a road and accepted as same, is described as follows:

BEGINNING at the intersection of the centerlines of State Route 422 and the Pindleton Ridge Road, the following courses and distances:

North 19 degrees 04 minutes 15 seconds East a distance of 48.22 feet to a point; thence North 21 degrees 40 minutes 04 seconds East a distance of 98.92 feet to a point; thence North 13 degrees

FILED
CLERK OF COURTS
CAMBRIA CO. PA.
MAR 29 12 25 PM '89

08 minutes 01 second East a distance of 104.18 feet to a point; thence North 03 degrees 38 minutes 52 seconds East a distance of 36.69 feet to a point; thence North 07 degrees 03 minutes 06 seconds West a distance of 224.86 feet to a point; thence North 14 degrees 52 minutes 53 seconds West a distance of 199.23 feet to a point; thence North 12 degrees 38 minutes 36 seconds West a distance of 99.36 feet to a point; thence North 23 degrees 11 minutes 26 seconds West a distance of 77.25 feet to a point; thence North 32 degrees 32 minutes 26 seconds West a distance of 86.78 feet to a point; thence North 08 degrees 42 minutes 35 seconds West a distance of 199.13 feet to the center of a cul-de-sac having an eighty (80') foot radius.

BEING part of a larger tract of land title to which became vested in Northern Forests II, Inc. and Sylvan Glen, Inc. by Deed of Bethenergy Mines Inc. dated June 26, 1985, and recorded in Deed Book Volume 1151 at page 871, and by Deed of Stanley H. Yeager et ux dated December 8, 1988, and recorded in Deed Book Volume 1213 at page 421.

UNDER AND SUBJECT to all exceptions, reservations, conditions and restrictions as are contained in prior conveyances.

Attached hereto and made a part of this description is the map/survey/draft of said road - see Exhibit "A".

(3). The Board of Supervisors hereby designates said road to be known as the Pindleton Ridge Road.

(4). The Deed shall be recorded in the Cambria County Recorder of Deed's Office and a copy of same together with draft or survey of the road shall be filed in the Cambria County Clerk of Court's Office.

RESOLVED AND ENACTED this 13th day of February, 1989.

TOWNSHIP OF CAMBRIA - BY:

Frederick Saugov
Chairman Of The Board Of Supervisors

Robert [Signature]
Supervisor

John [Signature]
Supervisor

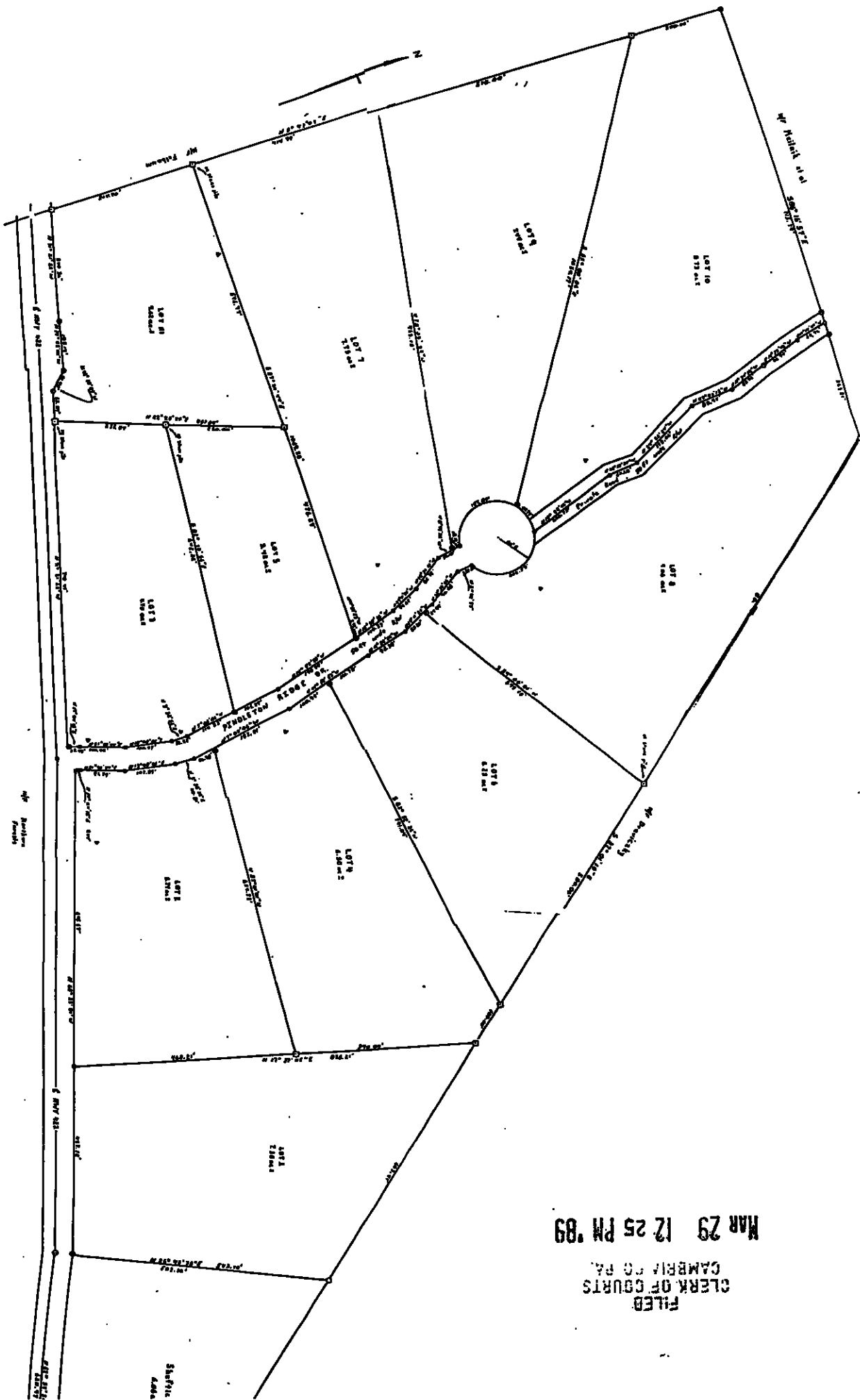
ATTEST:

Norma Zimmerman
(Secretary)

I hereby certify that the above is a true and exact copy of Resolution No. 235.

Norma Zimmerman
Norma Zimmerman Sec. Treas.

FILED
CLERK OF COURTS
CAMBRIA CO. PA.
MAR 29 12 25 PM '89



FILED
CLERK OF COURTS
CAMBRIDGE, PA.
MAR 29 12 25 PM '89