

TOWNSHIP OF CAMBRIA
CAMBRIA COUNTY
PENNSYLVANIA

R. D. # 1-1987

RESOLUTION NO. 192

WHEREAS, the Township of Cambria has been in contact with Bethlehem Steel Corporation - BethEnergy Mines, Inc. relative to a Confirmatory Deed Of Dedication confirming the offer of dedication of the streets and alleys located in the Village of Revloc as shown in Cambria County Plat Book Volume 3, Page 185; and,

WHEREAS, the Township of Cambria is concerned relative to the southerly portion of Fourth Street, beginning at the northerly line of Wood Avenue and extending to the southerly line of Harding Avenue, as to width, etc.; and,

WHEREAS, the present Board of Supervisors acknowledge that to their knowledge the Township of Cambria did not, within a twenty-one (21) year period of the date of any offer of dedication, by formal action or other acts, accept the offer of dedication (see Cambria County P.B.V. 3, Pg. 185) as to the southerly most portion of Fourth Street running from the southerly line of Harding Avenue for a distance of approximately 150 feet; and,

WHEREAS, the present Board of Supervisors acknowledge that to their knowledge the Township has not, within a twenty-one (21) year period of the date of the offer of dedication, by formal action or other acts, accepted the easterly most portion (beginning approximately 200 feet east of the easterly line of Fourth Street) of Highland Avenue as a street; and,

WHEREAS, the Township of Cambria desires to accept the aforesaid Confirmatory Deed Of Dedication of Bethlehem Steel Corporation - BethEnergy Mines, Inc. dated March 10, 1987, however, does so without admitting or denying its previous acceptance or nonacceptance of any alleys shown on Plat Book Volume 3, Page 185.

FILED
CLERK OF COURTS
CAMBRIA CO. PA.

Apr 6 3 02 PM '87


NOW, THEREFORE, BE IT RESOLVED AND IT IS HEREBY RESOLVED, by the Board of Supervisors of the Township of Cambria, on behalf of said Township, that the Confirmatory Deed of Dedication is accepted and that same be signed by the Chairman of the Board of Supervisors of the Township of Cambria on behalf of the Township and, further, that same be recorded in the Recorder of Deed's Office in and for Cambria County, Pennsylvania; and that this Resolution acknowledging the Confirmatory Deed Of Dedication be recorded in the Clerk of Court's Office in and for Cambria County, Pennsylvania, together with a copy of the Plan of Revloc, Cambria County, Pennsylvania, which is recorded in the Recorder of Deed's Office in and for Cambria County, Pennsylvania, in Map Book Volume 3, Page 185. However, by passage of this Resolution, the Township of Cambria does not admit nor deny as to the alleys shown on said map, its acceptance or nonacceptance of any offer of dedication relative to any or all as being public alleys - ways in Cambria Township, Cambria County, Pennsylvania.

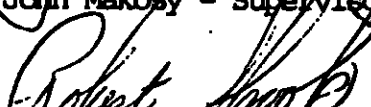
TOWNSHIP OF CAMBRIA - BY:


Fred Sauger, Chairman Of Board Of
Supervisors

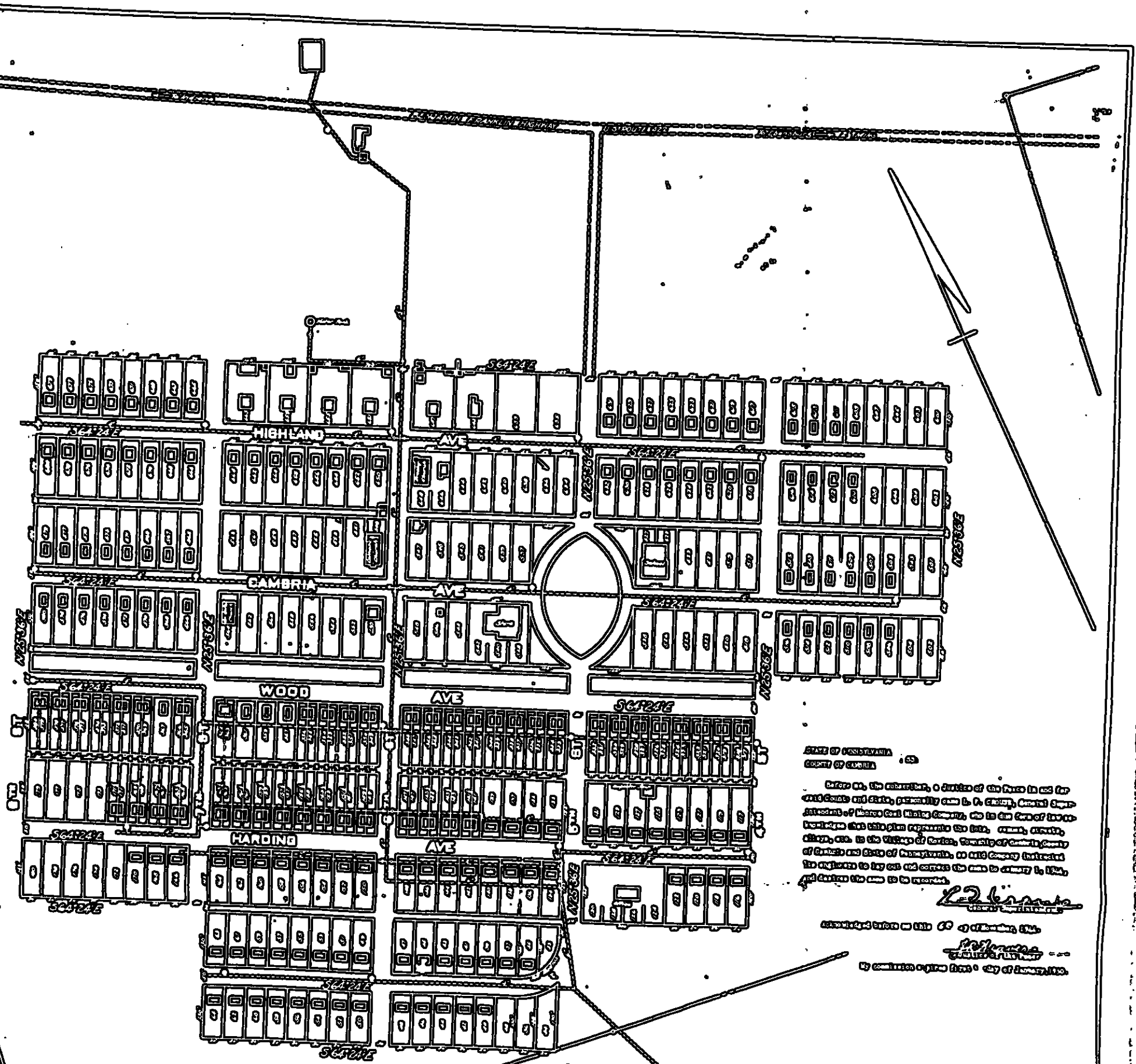
ATTEST:


Secretary


John Makosy - Supervisor


Robert Shook - Supervisor

6th
Charles
Monroe 1917

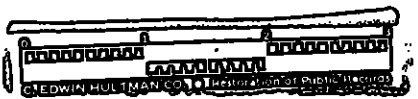


STATE OF PENNSYLVANIA
COUNTY OF CAMBRIA

Before me, the undersigned, a Justice of the Peace in and for said County and State, personally came to the undersigned, General Superintendent of Monroe Coal Mining Company, who in the face of my knowledge that this plan represents the site, extent, nature, character, and use in the Village of Loretto, Township of Cambria, County of Cambria and State of Pennsylvania, of said Company (located the engineers to lay out and construct the same to connect to 12th, and describe the same to be recorded.

[Signature]
Justice of the Peace

Subscribed before me this 10th day of February, 1917.
[Signature]
My commission expires 12th day of January, 1918.



Pg. 185
VOL. 3

MONROE COAL MINING CO.
PLANT
Loretto, Cambria Co., Pa.

C E R T I F I C A T I O N

I, Edward Luther, Secretary of the Township of Cambria, hereby certify that the foregoing is a true and correct copy of Resolution No. 192 of the Township of Cambria, Cambria County, Pennsylvania, accepting the Confirmatory Deed of Dedication of Bethlehem Steel Corporation - BethEnergy Mines, Inc. dated March 10, 1987; together with a copy of the Plan of Revloc (Map Book Volume 3, Page 185).

IN WITNESS WHEREOF, I have hereunto set my hand and affixed the seal of the Township of Cambria, this 6th day of April, 1987.


Edward Luther, Secretary