

ORDINANCE NO. 152

UPPER YODER TOWNSHIP, CAMBRIA COUNTY,

AN ORDINANCE FOR THE ACCEPTING, OPENING  
AND LAYING OUT OF GREGORY ROAD

BE IT ORDAINED, AND IT IS HEREBY ORDAINED that the Town-  
ship of Upper Yoder, County of Cambria, Pennsylvania, hereby  
accepts, opens and lays out as a public road Gregory Road, being  
40 feet in width, with the roadway being of greater width as  
a turning circle or turnaround at the terminus of said Road,  
as hereinafter described, with the centerline of Gregory Road  
being more particularly described as follows:

BEGINNING at the intersection of the centerlines  
of Woodmont Road and Gregory Road at Station 0+0,  
thence by the center line of Gregory Road South  
83° 50' 20' West a distance of 388.00 feet to  
Station 3+88.00 at the radius point of an 80 foot  
turning circle, the place of ending.

A map and profile showing said Gregory Road as prepared  
by Hinks and Locher Engineers, Inc., in October 1976, with the  
grade thereon approved by the Upper Yoder Township Supervisors  
on October 7, 1976, is attached hereto and made part of this  
Ordinance.

ORDAINED AND ENACTED this 4 day of NOVEMBER 1976.

UPPER YODER TOWNSHIP

By

Robert W. Hunt

Clarence L. Gillin

Edward F. DeFrehn  
Supervisors

ATTEST:

(SEAL) Edward F. DeFrehn  
Secretary

C E R T I F I C A T I O N

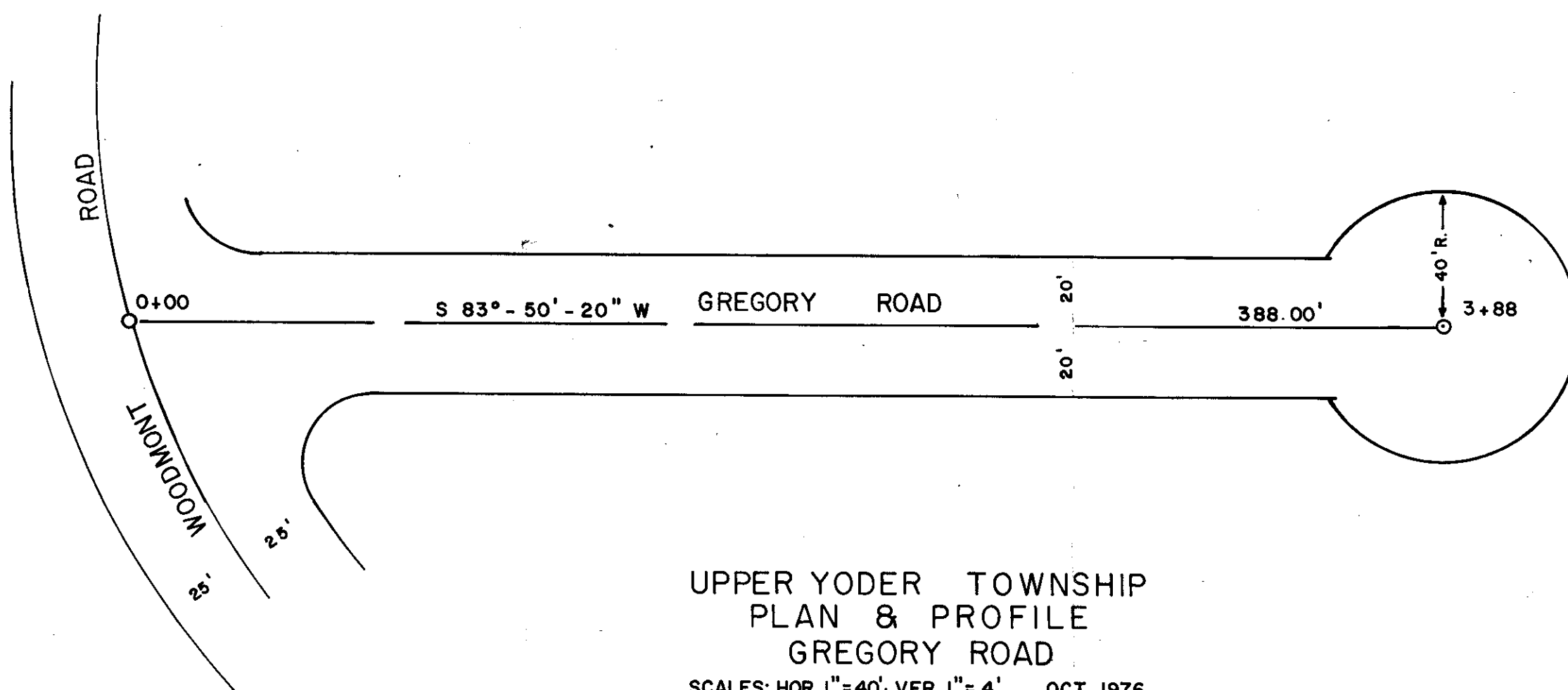
I hereby certify that the foregoing is a true and correct  
copy of the Ordinance adopted by the Supervisors of Upper Yoder  
Township, Cambria County, Pennsylvania, on the 4 day of  
NOVEMBER 1976.

(SEAL) Edward F. DeFrehn  
Secretary  
Upper Yoder Township Supervisors

PA Act # 4-1976

UPPER YODER TOWNSHIP, CAMBRIA COUNTY
AN ORDINANCE FOR THE ACCEPT- ING, OPENING AND LAYING OUT OF GREGORY ROAD
ORDINANCE NO. <u>153</u>
MARGOLIS & COPPERSMITH ATTORNEYS AT LAW EIGHTH FLOOR FIRST NATIONAL BANK BUILDING JOHNSTOWN, PENNSYLVANIA 15901

FILED  
CLERK OF COURTS  
CAMBRIA COUNTY, PA.  
NOV 15 10 14 AM '76  
STEPHEN J. SCHOVICH  
CLERK OF COURTS



UPPER YODER TOWNSHIP  
PLAN & PROFILE  
GREGORY ROAD

SCALES: HOR. 1"=40', VER. 1"=4' OCT, 1976  
HINKS AND LOCHER ENGINEERS, INC.  
CONSULTING ENGINEERS  
JOHNSTOWN, PA.

GRADE APPROVED THIS 7<sup>th</sup> DAY OF OCT. 1976  
BY THE UPPER YODER TOWNSHIP SUPERVISORS.

Robert W. Link SUPERVISOR  
Edward F. DeFuria SUPERVISOR  
William L. Sullivan SUPERVISOR

