

R.D. #1 Dec. 1971

FILED
CLERK OF COURTS
CAMBRIA CO. PA.

Ordinance # 12

SEP 15 2 16 PM '71

Portage Township

STEPHEN D. GBLACKOVICH
CLERK OF COURTS

ORDINANCE NO. 12

AN ORDINANCE OF THE TOWNSHIP OF PORTAGE, LAYING OUT, OPENING AND ADOPTING AS PUBLIC STREETS, AND PROVIDING FOR THE MAINTENANCE AND REPAIR OF SAID STREETS BY THE TOWNSHIP SUPERVISORS.

BE IT ENACTED AND ORDAINED, by the Supervisors of the Township of Portage, County of Cambria and State of Pennsylvania, as follows:

1. Portage Township Supervisors hereby lay out, open and ordain the following described streets located in the Township of Portage, County of Cambria and State of Pennsylvania.

2. That the said streets are located entirely in the Township of Portage, Pennsylvania.

3. That said streets will be used for public use and travel and will be maintained and kept in repair by the Portage Township Supervisors.

4. That the following described streets are hereby laid out, opened and added to and shall become a part of the public road system of the Township of Portage:

(1) BEGINNING at a point South 4° 32' West 115 feet from the intersection of Johnson Avenue and Blair Street, thence South 6° 17' West 735 feet a width of 50 feet, known as Blair Street in said Portage Township.

(2) BEGINNING at the intersection of Hammers Street and Conemaugh Avenue, thence North 85° 28' West 530 feet to the center line of Maple Avenue a width of 50 feet, known as Conemaugh Avenue in said Portage Township.

(3) BEGINNING at the intersection of Hammers Street and Sonman Avenue, thence North 85° 28' West 530 feet to the center line on Maple Avenue, with a width of 50 feet, known as Sonman Avenue in said Portage Township.

5. That on taking effect of this Ordinance, a certified copy, will be filed with the Clerk of Courts of Cambria County, Pennsylvania, along with maps prepared by the Portage Township Engineer.

6. That this Ordinance shall take effect five days after the adoption of the same.

ORDAINED AND ENACTED, this 22 day of February, 1970.

ATTEST:

PORTAGE TOWNSHIP SUPERVISORS

Charles Salzman
Secretary

BY: Steve Havulak
Chairman

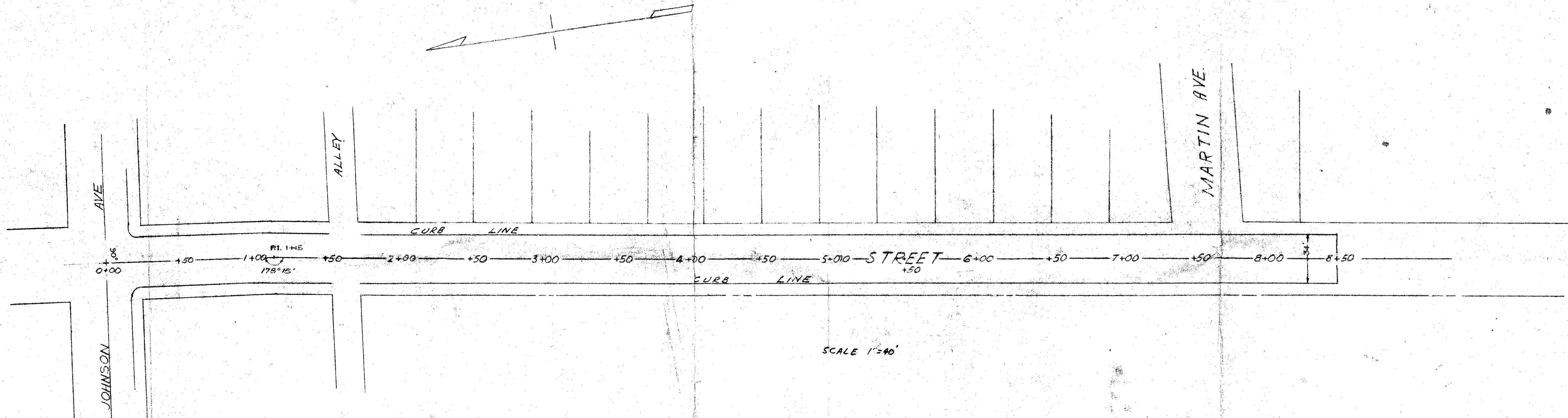
2. 1. 1

CERTIFICATION

I hereby certify that the attached Ordinance No. 12 was adopted at a regular meeting of the Portage Township Supervisors on February 22, 1971, and that the same is a true and correct copy of said Ordinance.

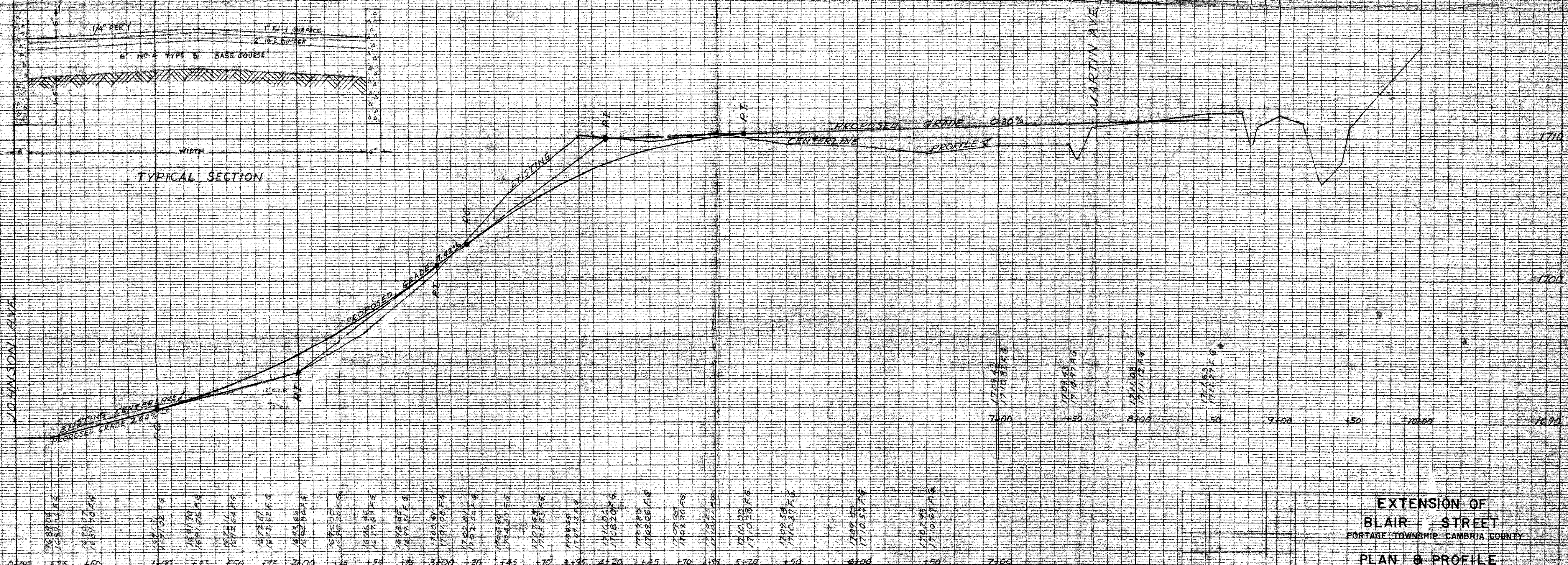
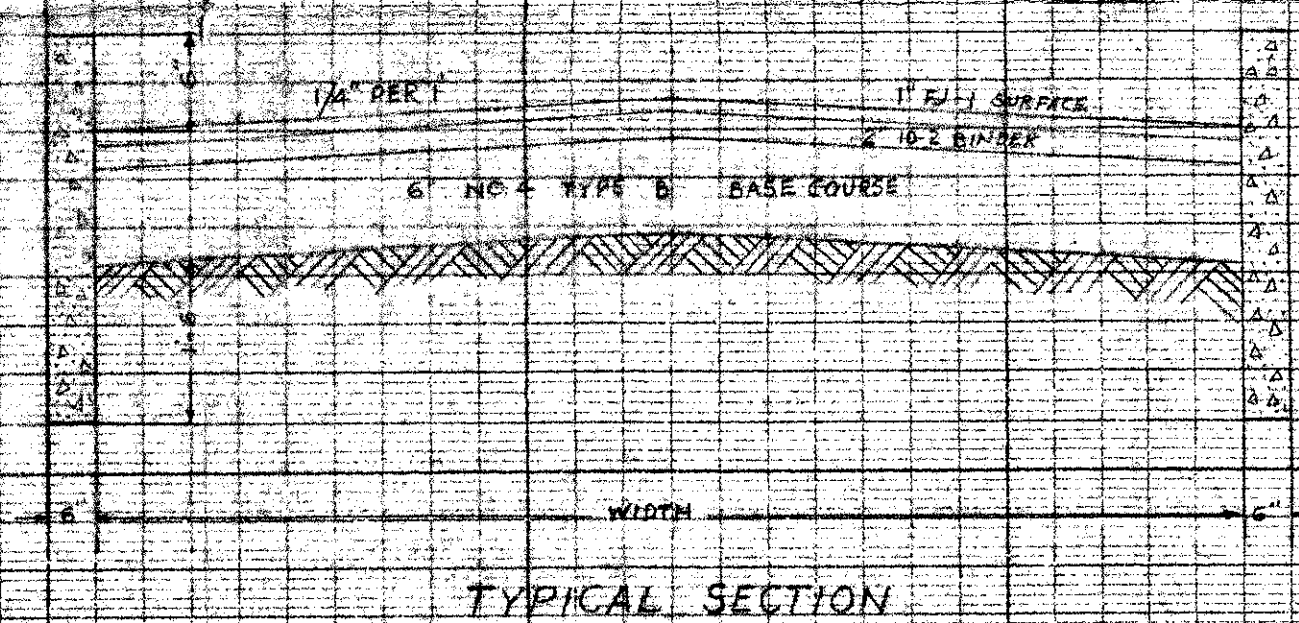
Charles Salsgiver

Charles Salsgiver
Secretary



REQUIRED LIST:

CLASS 1 EXCAVATION	1153 CU.YD.
6" CRUSHED AGGREGATE BASE (TYPE B)	3117 SQ.YD.
2" 10-2 BINDER W/ 1" F-1 SURFACE	3117 SQ.YD.
CONCRETE CURBING	1650 LIN.FT.



**EXTENSION OF
BLAIR STREET**
PORTAGE TOWNSHIP, CAMBRIA COUNTY

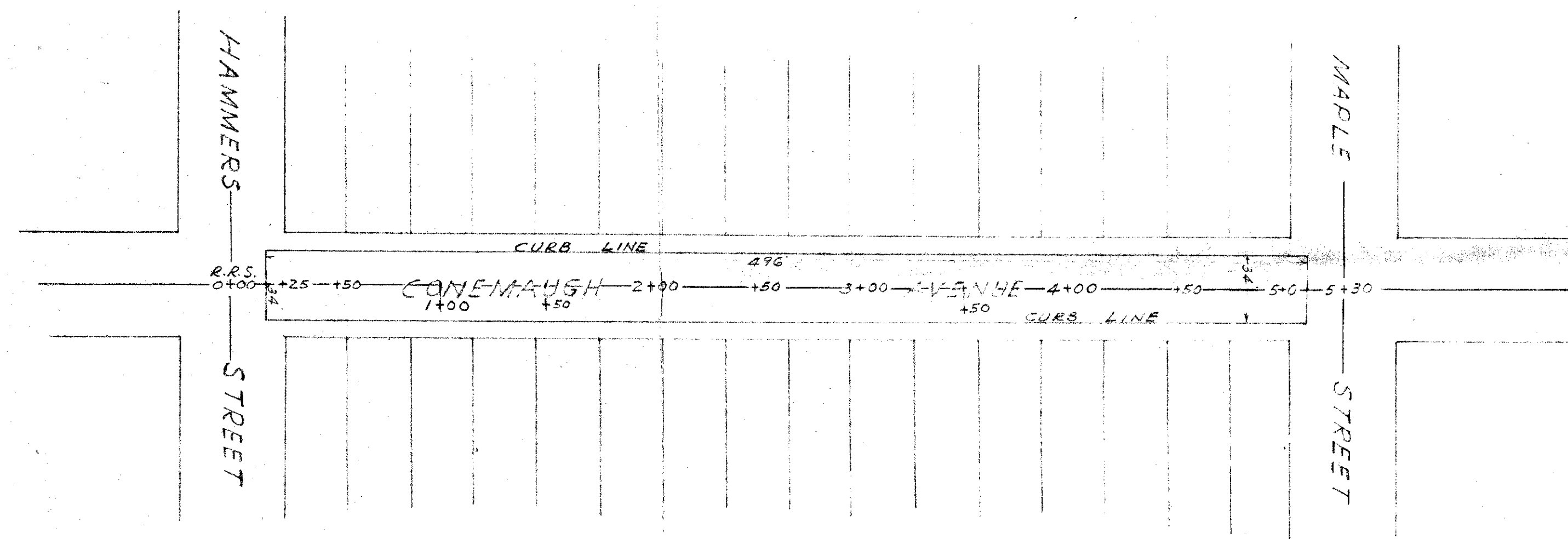
PLAN & PROFILE

"CLEARPRINT" PROFILE PLAN PLATE A
"CLEARPRINT PAPER CO."
MADE IN U.S.A.

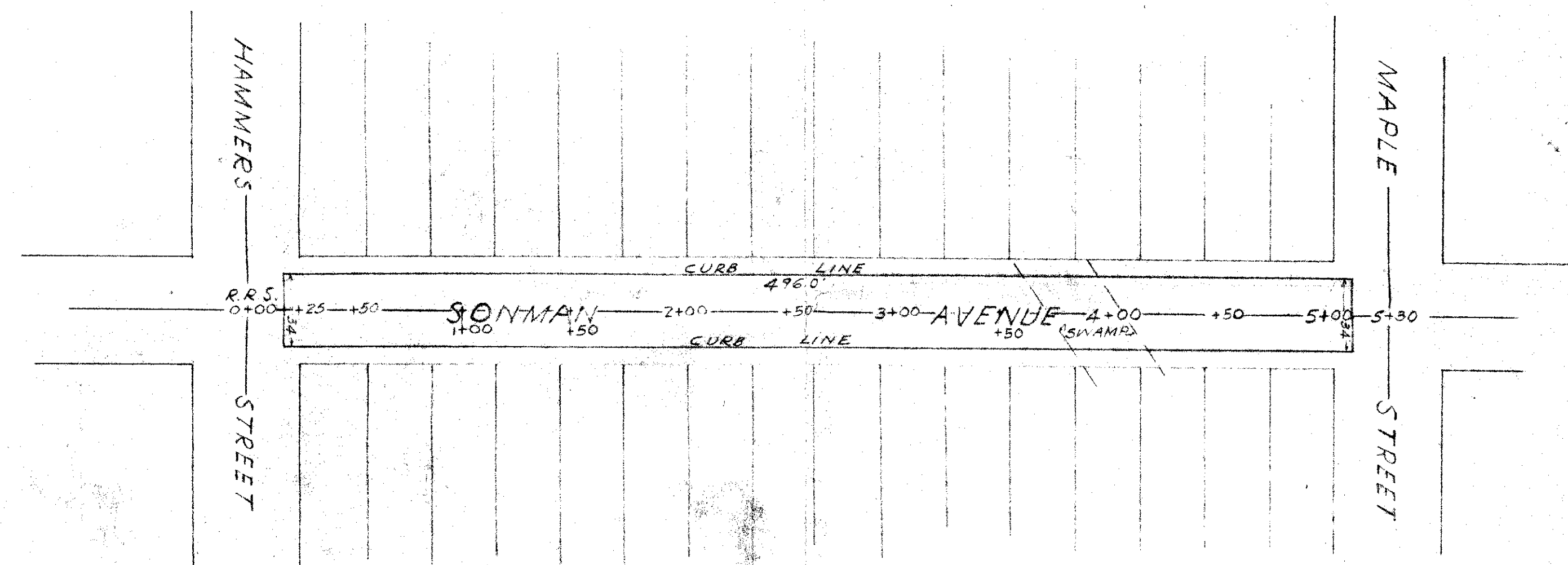
"CLEARPRINT" PROFILE PLAN PLATE A
"CLEARPRINT PAPER CO."
MADE IN U.S.A.

SCALE 1"=40' HOR
1"=4' VERT

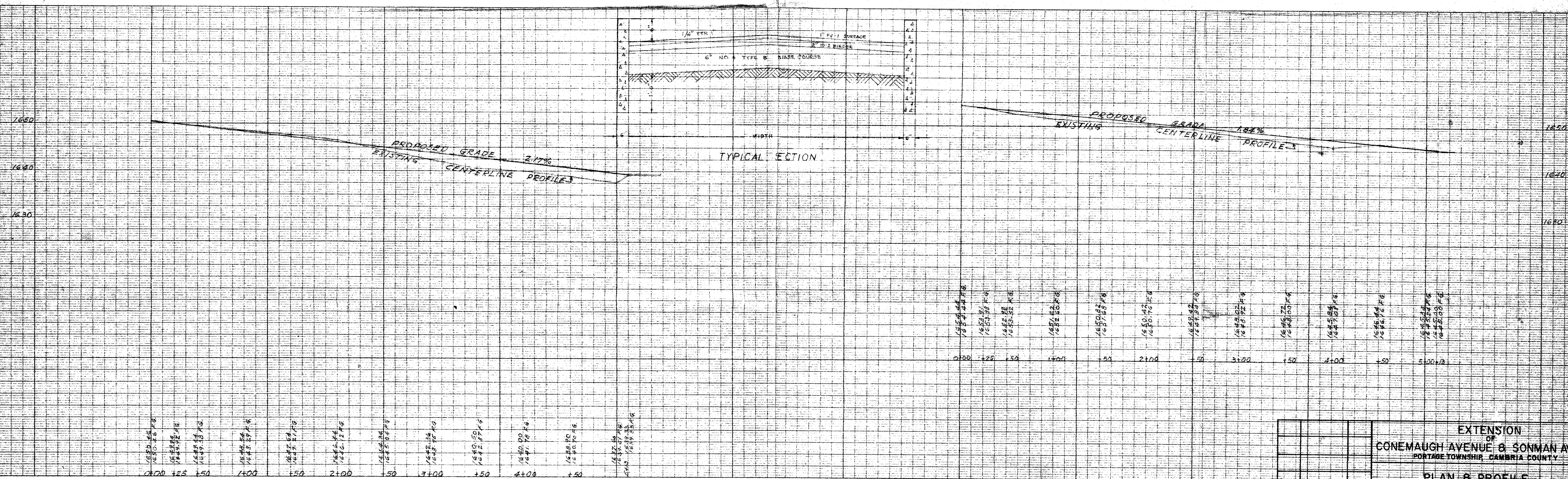
W.L.FEDORKO CONSULTING ENGINEERS PORTAGE, PENNSYLVANIA			
DRAWN BY <u>M.G.</u>	DATE <u>7-2-70</u>	JOB NO. <u>70-17</u>	SHEET NO. <u>2-45</u>
TRACED BY <u>W.L.F.</u>	DATE <u>7-10-70</u>	SCALE <u>AS NOTED</u>	
CHECKED BY <u>W.L.F.</u>	DATE <u>7-10-70</u>		
APPROVED BY <u>W.L.F.</u>	DATE <u>7-10-70</u>		



REQUIRED LIST:
 CLASS 1 EXCAVATION 245 CU YD
 6" CRUSHED AGGREGATE BASE (TYPE B) 1873 SQ YD
 2" 10-2 BINDER WITH 1" F-11 SURFACE 1873 SQ YD
 CONCRETE CURBING 36' LINFT



REQUIRED LIST:
 CLASS 1 EXCAVATION 150 CU YD
 6" CRUSHED AGGREGATE BASE (TYPE B) 1873 SQ YD
 2" 10-2 BINDER WITH 1" F-11 SURFACE 1873 SQ YD
 CONCRETE CURBING 36' LINFT



"CLEARPRINT" PROFILE PLAN PLATE A
 "CLEARPRINT PAPER CO."
 MADE IN U.S.A.

SCALE 1/8" = 10' HORIZ.
 1" = 10' VERT.

"CLEARPRINT" PROFILE PLAN PLATE A
 "CLEARPRINT PAPER CO."
 MADE IN U.S.A.

EXTENSION OF CONEMAUGH AVENUE & SONMAN AVENUE PORTAGE TOWNSHIP, CAMBRIA COUNTY			
PLAN & PROFILE			
W.L.FEDORKO CONSULTING ENGINEERS PORTAGE, PENNSYLVANIA			
DRAWN BY	DATE	JOB NO.	SHEET NO.
TRACED BY	DATE	10-17	
CHECKED BY	DATE	SCALE	
APPROVED BY	DATE	NOTED	2-46