

AN ORDINANCE FOR THE ACCEPTANCE, OPENING AND LAYING  
OUT OF SHEKOMEKO LANE AND PALLISER STREET

ORDINANCE NO. 134

BE IT ORDAINED, AND IT IS HEREBY ORDAINED that the Township  
of Upper Yoder, Cambria County, Pennsylvania, hereby accepts,  
opens and lays out as public roads in said Township the following:

No. 1. Shekomeko Lane, being 40 feet in width, the center  
line of the same being more particularly described as follows:

BEGINNING at station 0+0 at the intersection of  
the centerline of Luzerne Street Extension; thence  
by the centerline of Shekomeko Lane South  $31^{\circ} 42'$   
East 399 feet to station 3+99, the place of end-  
ing..

No. 2. That portion of Palliser Street, being 60 feet in width,  
the center line of the same being more particularly described as  
follows:

BEGINNING at station 3+76 at the intersection  
of Shekomeko Lane; thence by the centerline of  
Palliser Street North  $58^{\circ} 18'$  East a distance  
of 100 feet to station 4+76, the place of ending.

A map and profile showing said Shekomeko Lane and portion of Pal-  
liser Street as prepared by J.Zizan on April 18, 1973, and approved  
by the Upper Yoder Township Supervisors on May 3, 1973, is attached  
hereto and made part of this Ordinance.

ORDAINED AND ENACTED this 20th day of September 1973.

SUPERVISORS OF UPPER YODER TOWNSHIP

By Robert W. Hunt

ATTEST: Edward F. DeFrehn  
Secretary

Edward F. DeFrehn  
S. G. Werner.  
Supervisors

CERTIFICATION

I hereby certify that the foregoing is a true and correct copy of  
the Ordinance adopted by the Supervisors of Upper Yoder Township,  
Cambria County on the 20th day of September 1973.

Edward F. DeFrehn.  
Supervisors of Upper Yoder Township

No. *L.A. #1 Dec. 1973*

In the Court of Quarter  
Sessions of the County of  
Cambria, Pennsylvania

RE: An Ordinance for the  
acceptance, opening and lay-  
ing out of Shekomeko Lane  
and Palliser Street in the  
Township of Upper Yoder,  
Cambria County, Pennsylvania

CERTIFIED COPY

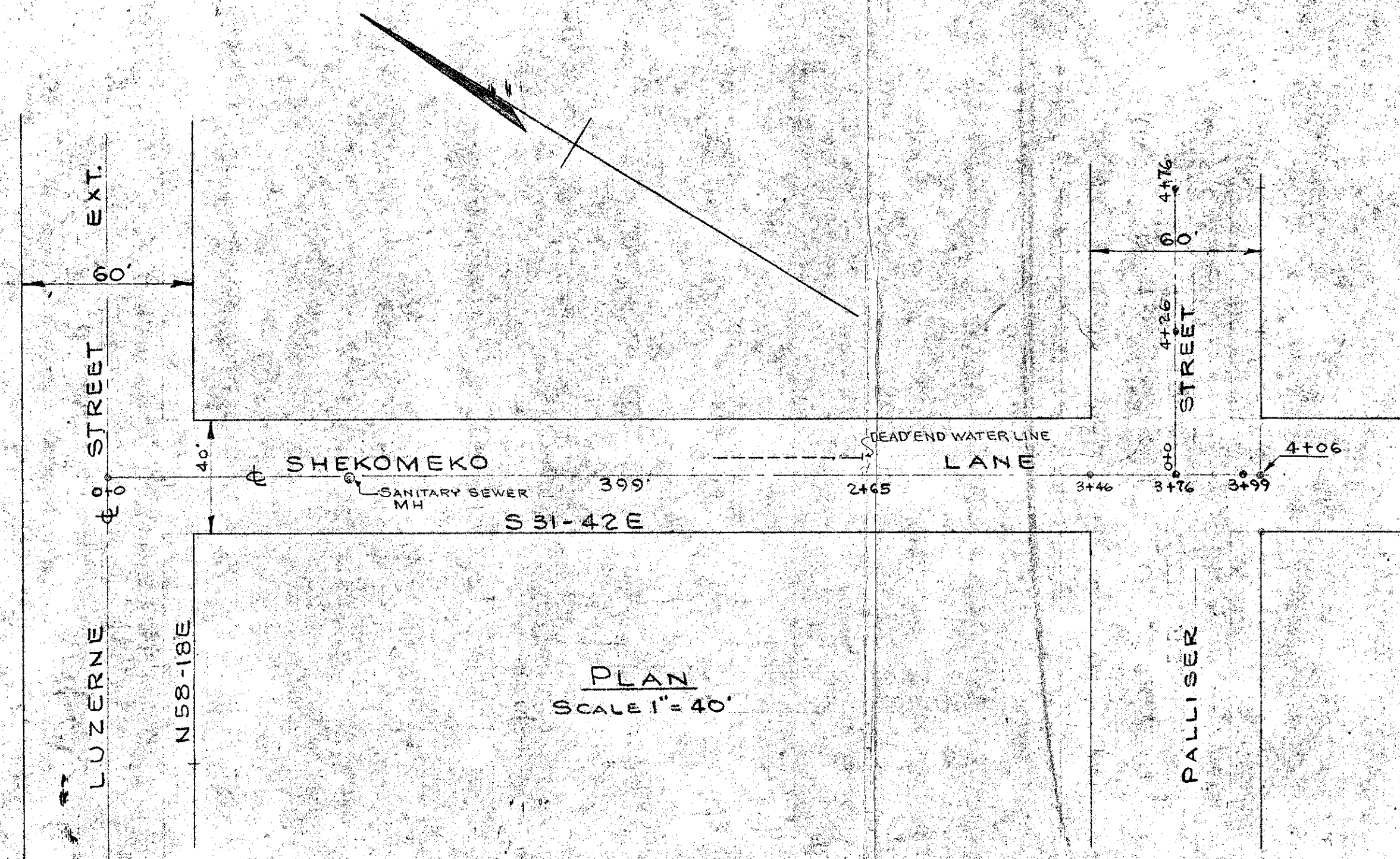
*Ordinance 134*

**MARGOLIS & COPPERSMITH**  
ATTORNEYS AT LAW  
EIGHTH FLOOR FIRST NATIONAL BANK BUILDING  
JOHNSTOWN, PENNSYLVANIA 15901

FILED  
CLERK OF COURTS  
CAMBRIA CO. PA.

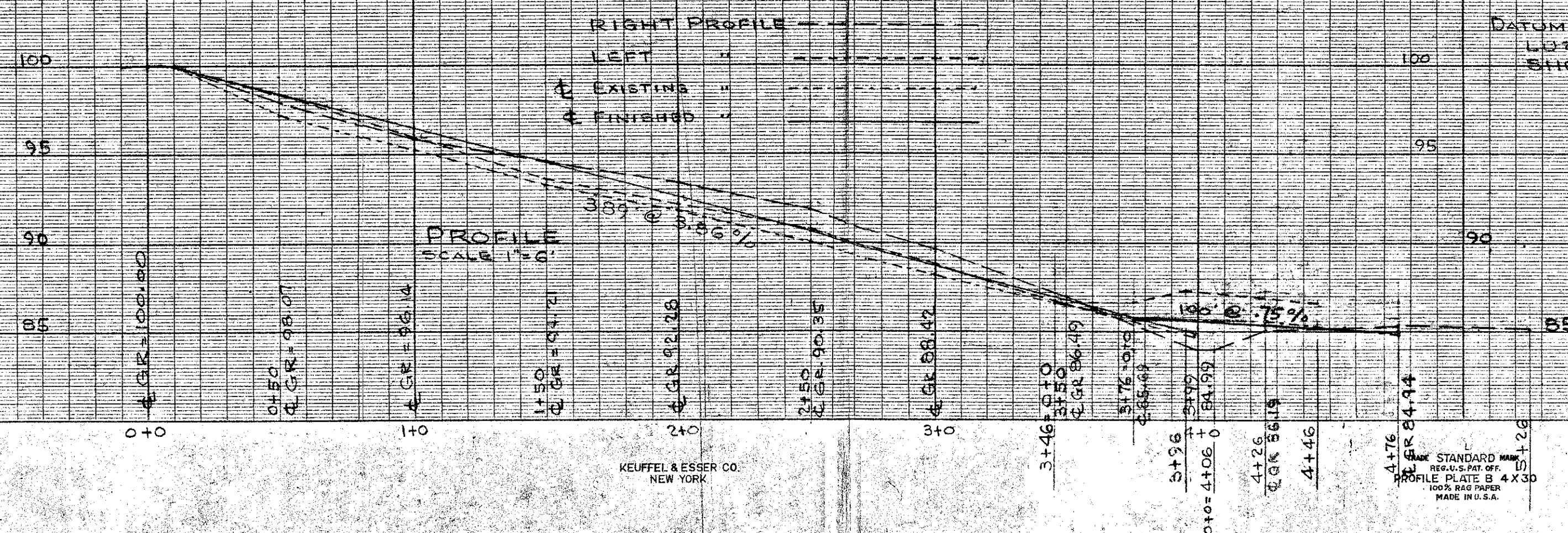
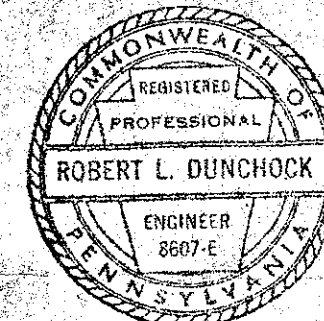
SEP 24 11 17 AM '73  
STEPHEN J. BLACKOVICH  
CLERK OF COURTS





PLAN  
SCALE 1" = 40'

GRADE APPROVED THIS 2nd DAY OF May 1973  
 BY UPPER YODER TOWNSHIP  
Robert W. Hunt SUPERVISOR  
Philip F. DeFecher SUPERVISOR  
A. G. Schinner SUPERVISOR



UPPER YODER TOWNSHIP  
 SHEKOMEKO LANE & PALLISER ST.  
 PLAN & PROFILE  
 SCALE 1" = 40' (PLAN), 1" = 6' (PROFILE)  
 APRIL 18, 1973  
 J. ZIZAN  
 DATUM 100.00 INTERSECTION OF  
 LUZERNE STREET EXT. &  
 SHEKOMEKO LANE

TRAK STANDARD MARK  
 REPRODUCED BY  
 PROFILE PLATE B 4 X 30  
 100% B&S PAPER  
 MADE IN U.S.A.

KEUFFEL & ESSER CO.  
 NEW YORK

TRAK STANDARD MARK  
 REPRODUCED BY  
 PROFILE PLATE B 4 X 30  
 100% B&S PAPER  
 MADE IN U.S.A.

KEUFFEL & ESSER CO.  
 NEW YORK