

R.D. 2 September 1970

ORDINANCE NO. 20

MIDDLE TAYLOR TOWNSHIP,
CAMBRIA COUNTY

PORTIONS OF EARL STREET
AND CASTLE STREET

MARGOLIS & COPPERSMITH
ATTORNEYS AT LAW
EIGHTH FLOOR FIRST NATIONAL BANK BUILDING
JOHNSTOWN, PENNSYLVANIA 15801

FILED
CLERK OF COURTS
CAMBRIA CO. PA.

AUG 21 1 49 PM '70

STEPHEN D. OBLACKOVICH
CLERK OF COURTS

ORDINANCE NO. 20

AN ORDINANCE FOR THE ACCEPTING, OPENING AND
LAYING OUT OF A PORTION OF EARL STREET AND
CASTLE STREET IN THE TOWNSHIP OF MIDDLE TAYLOR

BE IT ORDAINED, and it is hereby ordained that the Township
of Middle Taylor, Cambria County, Pennsylvania, hereby accepts,
opens and lays out as public roads in said Township the following
roads:

EARL STREET (40 feet wide) between Garden Street and
Eichler Street, being a distance of 316 feet of said Earl Street.

CASTLE STREET (40 feet wide) between Berry Street and
Eichler Street, being a distance of 440 feet of said Castle Street.

A map showing the portion of said Earl Street and Castle
Street being accepted is attached hereto and made part of this
Ordinance.

ORDAINED AND ENACTED this 12th day of August 1970.

MIDDLE TAYLOR TOWNSHIP

By Harry R. Bens
Montell Harrison



Supervisors

ATTEST: Mrs. Mildred Harrison
Secretary

CERTIFICATION

I hereby certify that the foregoing is a true and correct copy
of the Ordinance adopted by the Supervisors of Middle Taylor
Township, Cambria County, on the 12th day of August 1970.

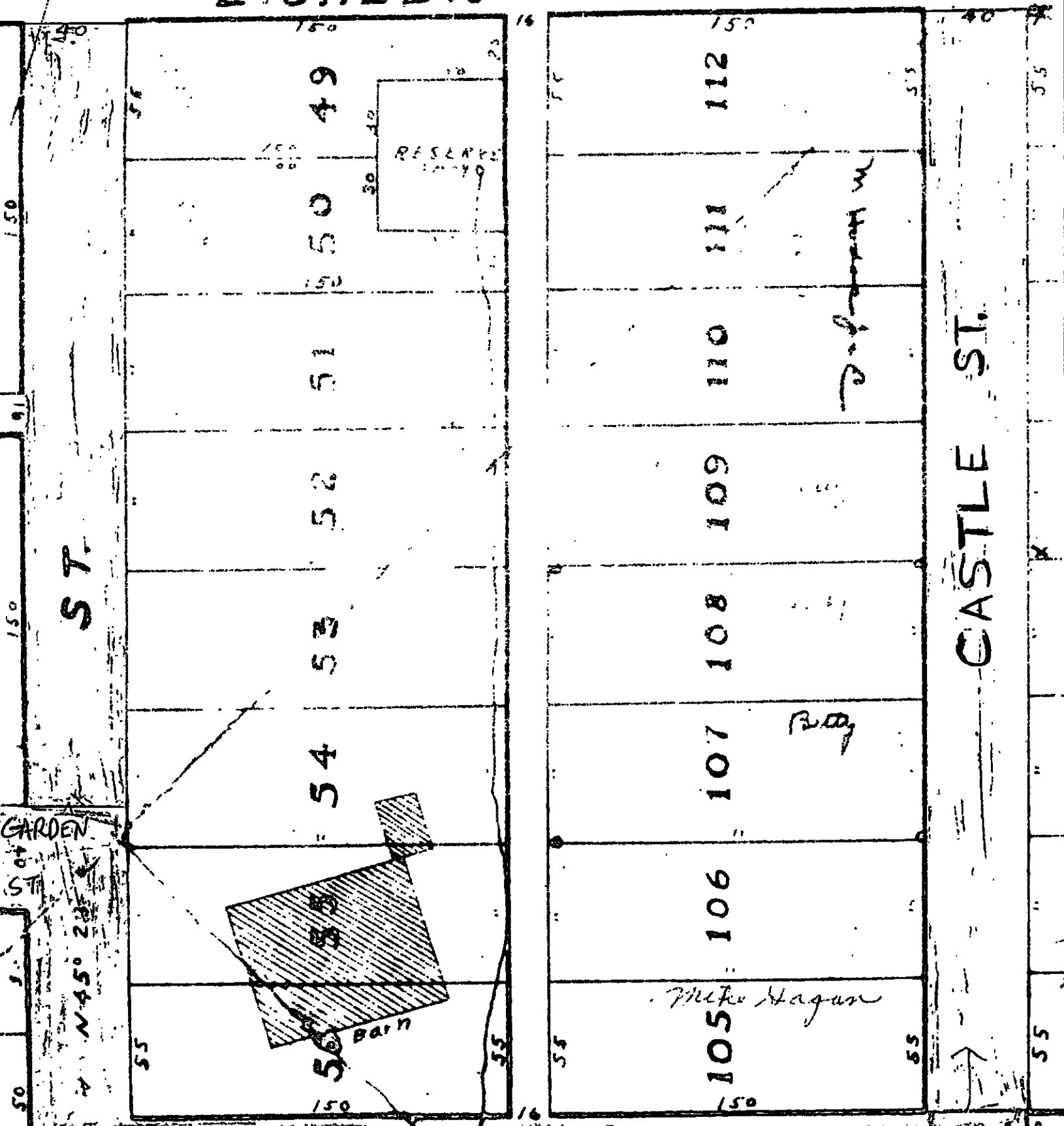
Mrs. Mildred Harrison
Secretary, Supervisors of
Middle Taylor Township

 → NEWLY ACCEPTED STREETS
 → EXISTING TOWNSHIP STREETS

S 49° 37' E

1037.2
775.5

EICHLER



BERRY STREET

EARL ST.

ST.

CASTLE ST.