

No. Rel. 7 Sept Sessions, 1966

IN THE COURT OF QUARTER SESSIONS
OF CAMBRIA COUNTY, PENNSYLVANIA

AN ORDINANCE LAYING OUT, OPENING
AND ADOPTING A PUBLIC ROAD IN
GALLITZIN TOWNSHIP, CAMBRIA
COUNTY, PENNSYLVANIA

ORDINANCE NO. 2

LAW OFFICES

MYERS, TAYLOR & PEDUZZI

213 SOUTH CENTER STREET
EBENSBURG, PENNSYLVANIA 15931

FILED
CLERK OF COURTS
CAMBRIA CO. PA.

AUG 9 1 43 PM '66

STEPHEN D. OBLACKOVICH
CLERK OF COURTS

TOWNSHIP OF GALLITZIN
CAMBRIA COUNTY
PENNSYLVANIA

ORDINANCE NO. 2

AN ORDINANCE LAYING OUT, OPENING AND
ADOPTING A PUBLIC ROAD IN GALLITZIN
TOWNSHIP, CAMBRIA COUNTY, PENNSYLVANIA

The Township of Gallitzin hereby ordains as follows:

SECTION 1. That a road, the centerline of which is described in Section 2 hereof, be and hereby is laid out, opened and ordained as a public road in Gallitzin Township, Cambria County, Pennsylvania.

SECTION 2. That the centerline of said road is described in accordance with a print of a survey by L. Robert Kimball, Consulting Engineers, dated October, 1960, and attached hereto and made a part hereof, as follows:

BEGINNING at a point in the center of Township Route No. 472, said point of beginning being located North 44° 45' West a distance of 332 feet from the center of the intersection of former Legislative Route No. 221 with State Highway Route No. 36; thence extending North 26° 30' East 643 feet to a point; thence North 41° 20' West 470 feet to a point; thence North 65° West 195 feet to a point; thence North 86° 05' West 423 feet to a point; thence North 62° 45' West 735 feet to a point; thence North 45° 50' West 212 feet to a point; thence North 48° 30' West 510 feet to a point; thence North 40° West 332.5 feet to a point; thence North 22° 30' West 362.5 feet to a point; thence North 79° 30' West 230 feet to a point; thence North 68° 20' West 303 feet to a point; and thence North 53° West 187 feet to a point at the dividing line between Dean Township and Gallitzin Township and place of ending.

SECTION 3. The width of said road is established and ordained as thirty-three (33) feet, being sixteen and one-half (16½) feet on each side of the aforesaid centerline.

ENACTED AND ORDAINED this 2 day of August, 1966.

ATTEST:

Catherine Ball
Secretary

TOWNSHIP OF GALLITZIN

Thomas R. Bradley
Chairman of Board of Supervisors

Levin P. Adams
Supervisor

Paul T. Deloyes
Supervisor

The undersigned, Secretary of the Board of Supervisors of Gallitzin Township, Cambria County, Pennsylvania, hereby certifies that the foregoing is a true and correct copy of an Ordinance adopted at a meeting of the Supervisors of Gallitzin Township, Cambria County, Pennsylvania, held August 2, 1966.

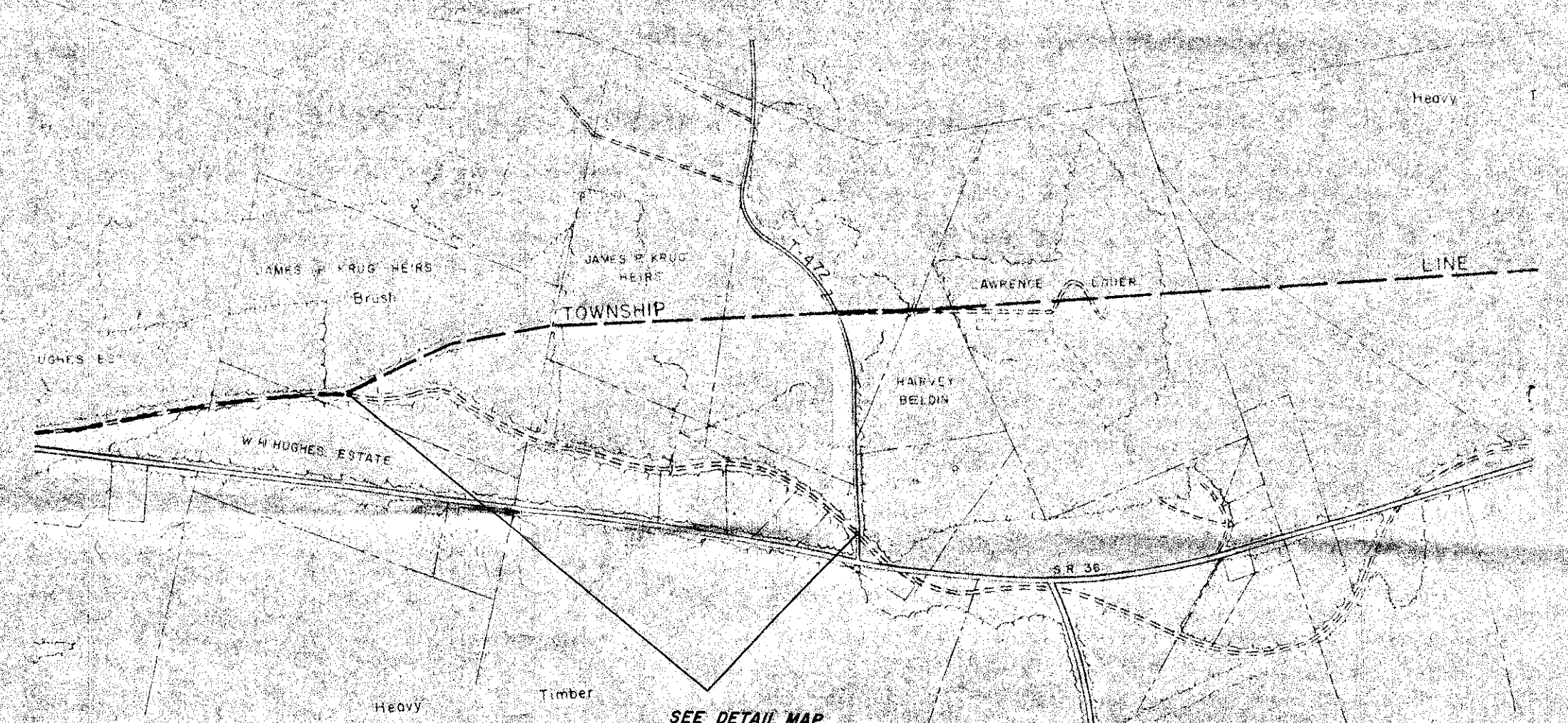
Catherine Ball
Secretary

Not Microfilmed

Ed #7 Sept. 1966

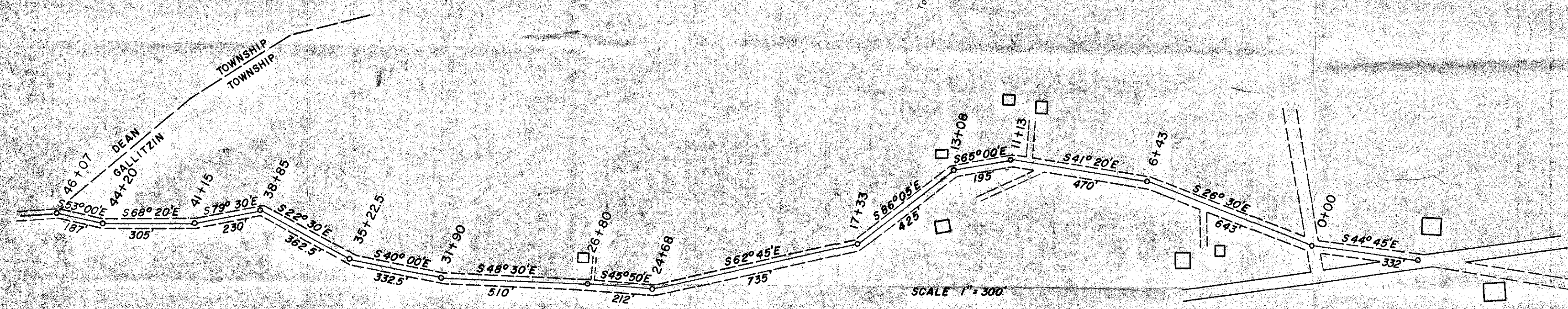
DEAN

TOWNSHIP



GALLITZIN

TOWNSHIP



PLAN SHOWING VACATED PORTION OF L.R. 221 TO BE
ACCEPTED BY GALLITZIN TOWNSHIP SUPERVISORS
GALLITZIN TOWNSHIP, CAMBRIA COUNTY, PENNSYLVANIA
OCTOBER, 1960

L. ROBERT KIMBALL
CONSULTING ENGINEERS
EBENSBURG, PENNSYLVANIA

PORTIONS OF THIS MAP MADE
FROM PLANS BY OTHERS