

Rd #3 Sept 1966

ORDINANCE

MIDDLE TAYLOR TOWNSHIP

EARL STREET, GARDEN
STREET, VIEW STREET,
BERRY STREET, PRINCE
STREET, CASTLE STREET,
KNOX STREET AND CERTAIN
UNNAMED 16 FOOT WIDE
ALLEYS

FILED
CLERK OF COURTS
CAMBRIA CO. PA.

JUL 14 1 05 PM '66

STEPHEN D. ONLACKOVICH
CLERK OF COURTS

MARGOLIS, COPPERSMITH & SHAHADE
ATTORNEYS-AT-LAW
FIRST NATIONAL BANK BUILDING
JOHNSTOWN, PENNSYLVANIA 15901

AN ORDINANCE FOR THE ACCEPTING, OPENING AND LAYING OUT OF
A PORTION OR ALL OF EARL STREET, GARDEN STREET, VIEW
STREET, BERRY STREET, CASTLE STREET, PRINCE STREET,
KNOX STREET AND CERTAIN UNNAMED 16 FOOT WIDE ALLEYS

BE IT ORDAINED, and it is hereby ordained that the
Township of Middle Taylor, Cambria County, Pennsylvania, hereby
accepts, opens and lays out as public roads in said Township
the following roads and alleys:

Earl Street (40 feet wide) between Legislative
Route 11015 and Garden Street.

Garden Street (40 feet wide) between Earl Street
and View Street.

View Street (40 feet wide) beginning at the north-
west terminus of Garden Street, thence North $19^{\circ} 35'$ East 166.61
feet.

Berry Street (40 feet wide) between Earl Street and
Castle Street.

Castle Street (40 feet wide) between Berry Street
and Taft Street.

Unnamed 16 foot wide alley, beginning on the south-
erly line of Taft Street (a street heretofor accepted) opposite
the terminus of Castle Street, thence South $1^{\circ} 10'$ East 316
feet to the northerly side of Knox Street.

Unnamed 16 foot wide alley, beginning South $1^{\circ} 10'$
East 150 feet of the southerly line of Taft Street at another

unnamed 16 foot wide alley, thence North 88° 50' East to Prince Street.

Prince Street (40 feet wide) beginning at the western terminus of the aforesaid unnamed 16 foot wide alley, thence North 1° 10' West 166 feet to the southerly line of Taft Street.

Knox Street (40 feet wide) beginning at the southerly terminus of a 16 foot wide unnamed alley, thence North 88° 50' East 1395.4 feet, more or less.

A survey showing the said Streets and alleys, as prepared by Joseph E. Lindsay, P. E. is attached hereto and made part of this Ordinance.

ORDAINED AND ENACTED this 13th day of July, 1966.

SUPERVISORS OF THE TOWNSHIP
OF MIDDLE TAYLOR

BY Dugan Kiser
President

ATTEST:

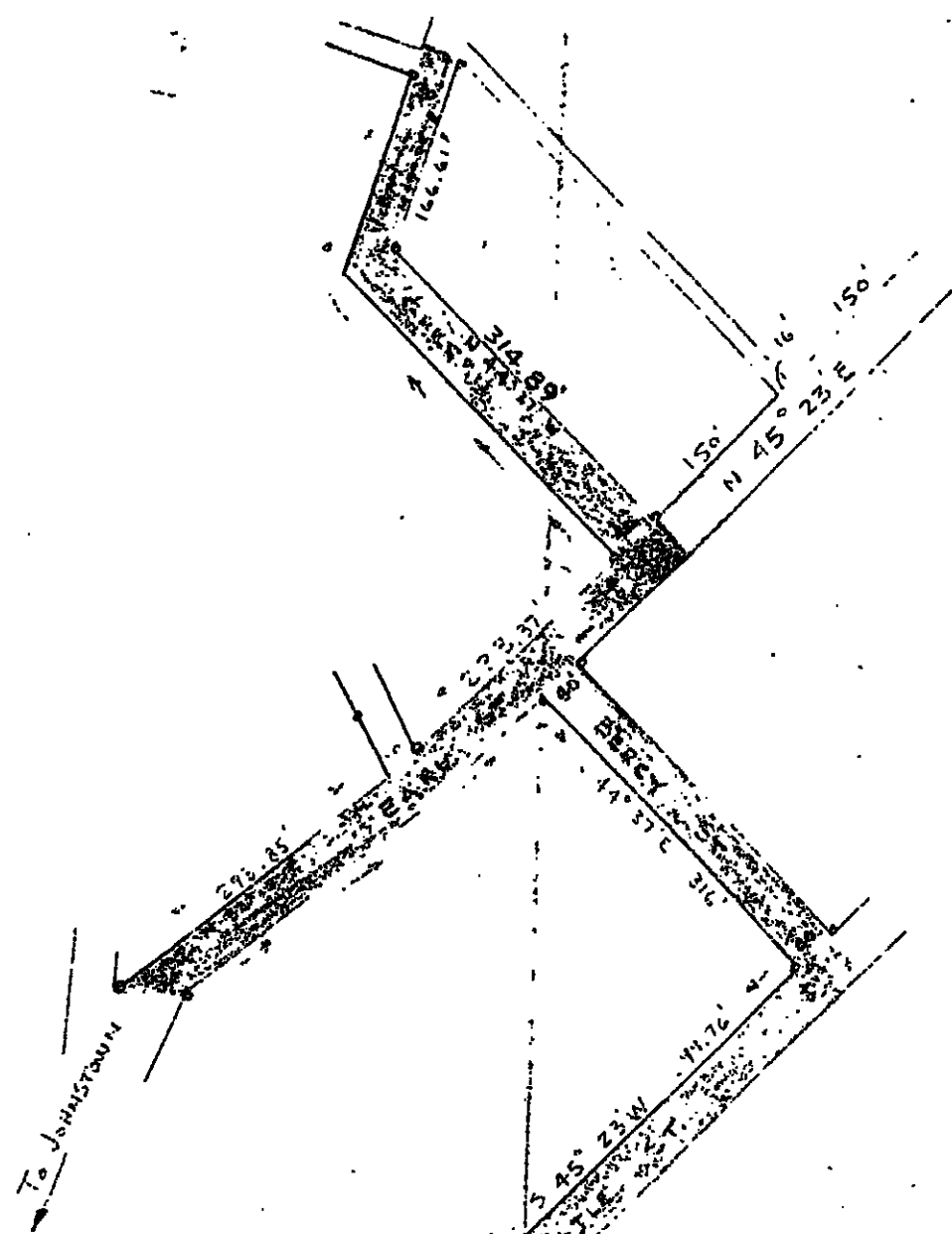
Montell Harrison
Secretary

CERTIFICATION

I hereby certify that the foregoing is a true and correct copy of the Ordinance adopted by the Supervisors of Middle Taylor Township, Cambria County, Pennsylvania, on the 13 day of July, 1966.

Montell Harrison
Secretary, Supervisors of
Middle Taylor Township

Rd #3 Sept. 1966
Nat Microfilmed

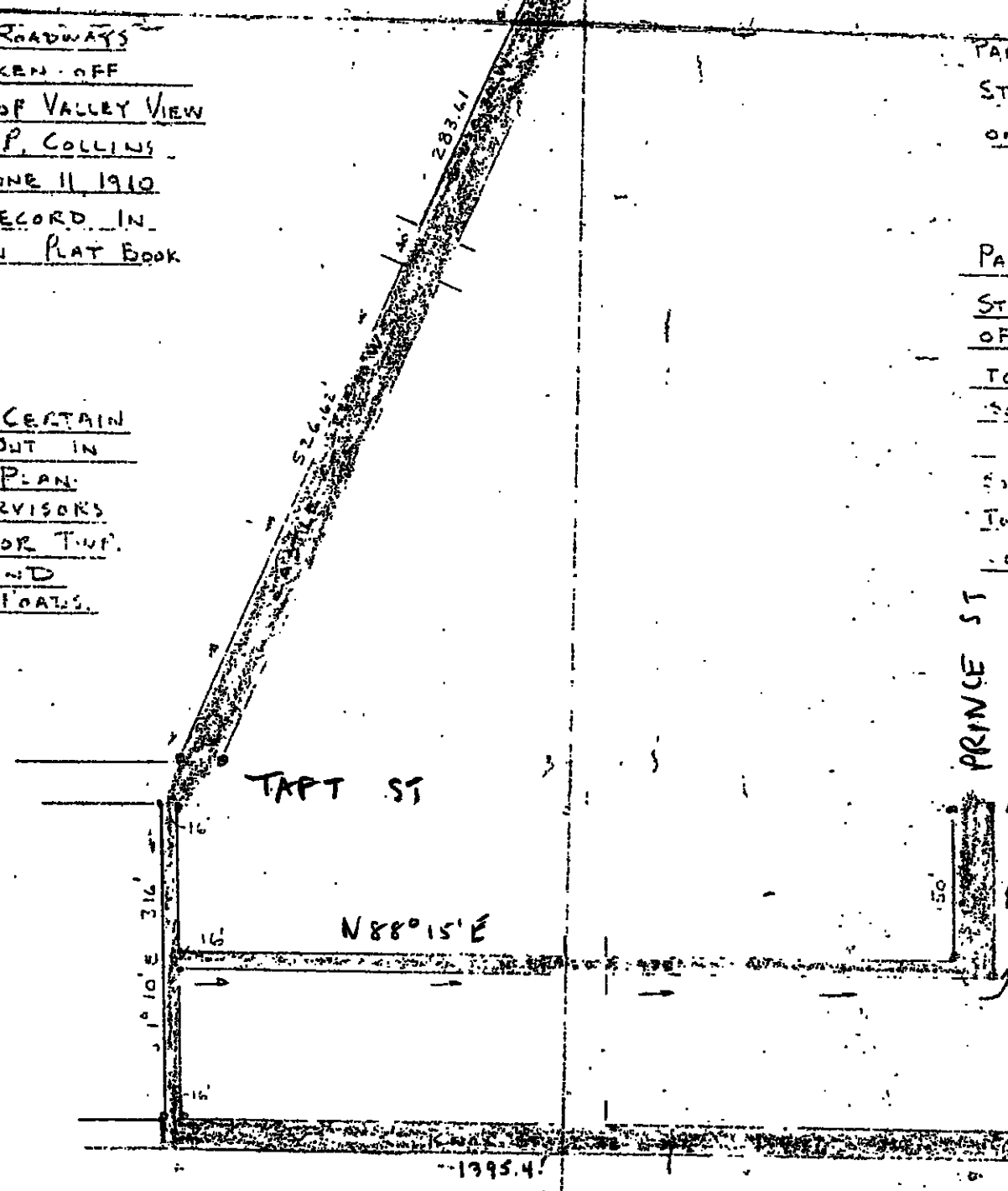


THIS OVERLAY OF ROADWAYS
AS SHOWN WAS TAKEN OFF
THE CORRECT MAP OF VALLEY VIEW
AS CERTIFIED BY C.P. COLLINS
CIVIL ENGINEER JUNE 11 1910
PLAN OF LOTS ON RECORD IN
CAMBRIA COUNTY IN PLAT BOOK
NO 1 PAGE 92

PURPOSE:
THIS OVERLAY OF CERTAIN
ROADWAYS AS LAID OUT IN
ABOVE MENTIONED PLAN
IS FOR THE SUPERVISORS
OF MIDDLE TAYLOR TWP.
TO TAKE OVER AND
MAINTAIN AS TWP. ROADS.

PART N^o 1
STARTING AT A POINT SOUTH WEST
ON EARL ST. TO GARDEN ST.
TO VIEW ST.

PART N^o 2
STARTING AT THE INTERSECTION
OF EARL ST AND BERCY ST
TO INTERSECTION OF CASTLE ST.
SOUTH WEST TO INTERSECTION TAYL ST.
SOUTH EAST ON 16^{FT} RIGHT OF WAY
TO KNOX ST.
SOUTH EAST ON KNOX ST.



PRINCE ST

SEE
KNOX ST.
EXTENSION
2 1/2 MG.