

22- 8/1  
No. R. D. 2 June

Sessions  
1961

ORDINANCE

Filed - 4-17-61

LAW OFFICES

MYERS, TAYLOR & PEDUZZI

213 S. CENTER STREET-OPPOSITE COURT HOUSE  
EBENSBURG, PENNSYLVANIA

O R D I N A N C E

BE IT ENACTED AND ORDAINED BY AUTHORITY OF THE SUPERVISORS OF THE  
TOWNSHIP OF CAMBRIA, AND IT IS HEREBY ENACTED AND ORDAINED:

That a portion of a public road beginning at a point in the center line of the intersection of the Township Road No. 456 running from Winterset to State Highway Route No. 219 and Township Road No. 454 running from Ebensburg to Bradley Junction and extending through land of Cambria County and land of Herman H. Hoover North 43° 31' East 272 feet to a point; North 42° 47' East 185 feet to a point; North 47° 18' East 122 feet to a point; North 61° 45' East 198 feet to a point; North 38° 00' East 89 feet to a point; North 19° 02' East 892 feet to a point and North 17° 58' East 255 feet to a spike, be vacated, and that there be laid out and opened as a public highway to replace the portion of the roadway herein vacated, a road 40 feet in width, beginning at a point in the said Highway known as Township Route No. 454 leading to Bradley Junction and extending in a Westerly direction, with a curve to the right having a radius of 380 feet, an arc distance of 429.95 feet to a point; and thence South 82° 45' West 1345 feet to the Township Road known as Route No. 456 leading from Winterset to State Highway Route No. 219. A map showing the portion of the road to be vacated and the portion to be supplied is on file and may be examined at the Office of the Supervisors of Cambria Township, 112 S. West Street, Ebensburg, Pennsylvania.

ENACTED AND ORDAINED this 2nd. day of December, 1960

SUPERVISORS OF CAMBRIA TOWNSHIP

*Ralph Fulton*

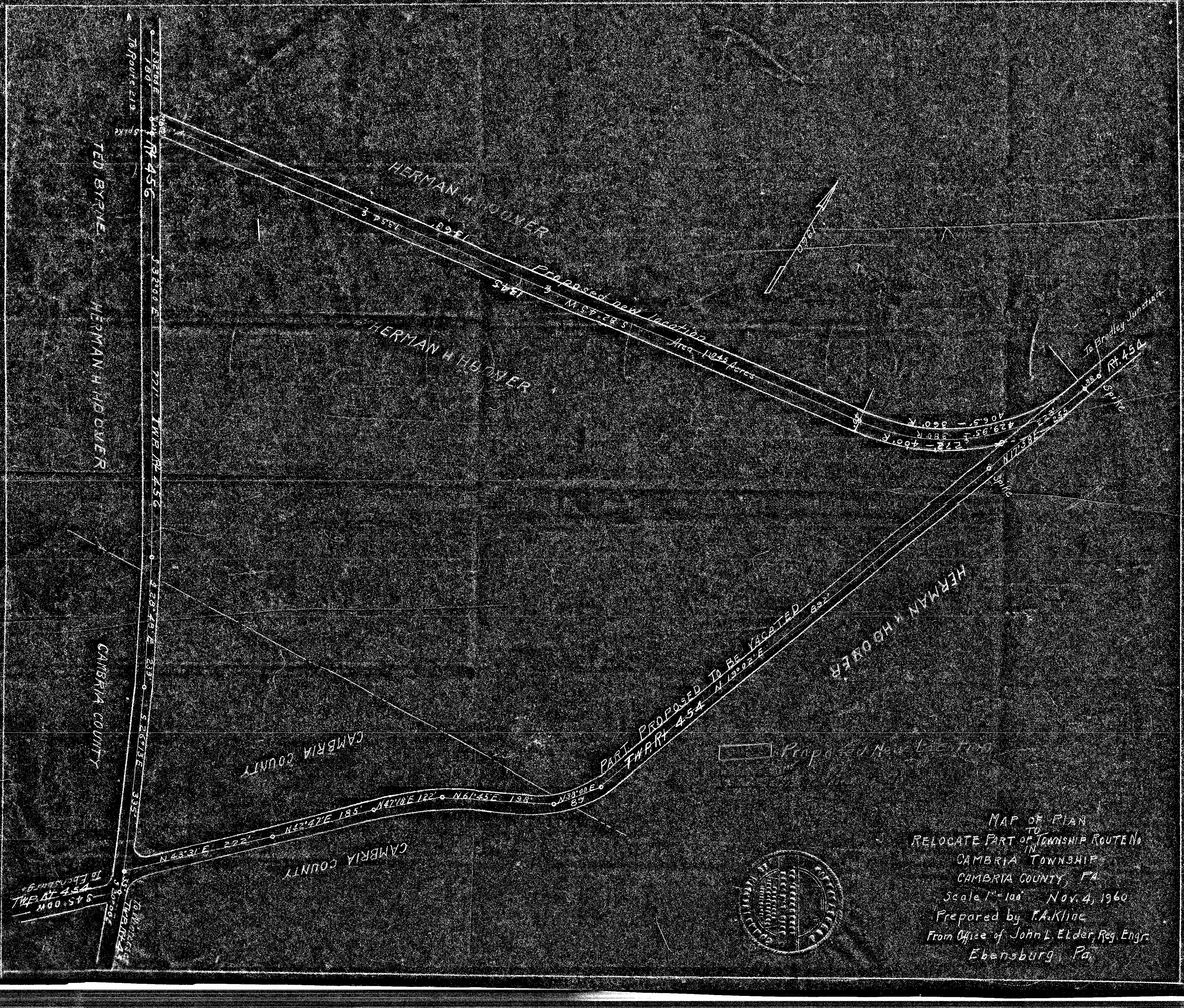
By - Ralph Fulton  
Chairman of the Board of Supervisors

ATTEST:

CHARLES R. SHARBAUGH  
Secretary

Ad # 2 June 1961  
Not Microfilmed.





MAP OF PLAN  
TO  
RELOCATE PART OF TOWNSHIP ROUTE NO.  
IN  
CAMBRIA TOWNSHIP  
CAMBRIA COUNTY, PA  
Scale 1"=100' NOV. 4, 1960  
Prepared by F.A. Kline  
From Office of John L. Elder, Reg. Engr.  
Ebensburg, Pa.