

L.S.
NO. ~~MEC~~. 1 MARCH SESSIONS, 1961

ORDINANCE FOR CAMBRIA TOWNSHIP

Filed: December 10, 1960

Cambria County

JAMES T. FAGAN

CLERK of COURTS

Ebensburg, Pennsylvania

A. Myers.

Filed -

12-10-60

O R D I N A N C E

BE IT ENACTED AND ORDAINED BY AUTHORITY OF THE SUPERVISORS OF THE
TOWNSHIP OF CAMBRIA, AND IT IS HEREBY ENACTED AND ORDAINED:

That a street 40 feet in width known and designated as Maple Avenue
on the Plan of Mylo Park, recorded in Cambria County in Plat Book Volume 2 at
page 137, situate in Cambria Township, is hereby opened and adopted as a public
street from a point on what is known as High Street, William Penn Highway, and
extending in a northwesterly direction a distance of about 680 feet to Penn
Street; and thence in a northerly direction a distance of about 260 feet to
Woodland Street.

December

ENACTED AND ORDAINED this 2nd day of ~~November~~, 1960.

SUPERVISORS OF CAMBRIA TOWNSHIP

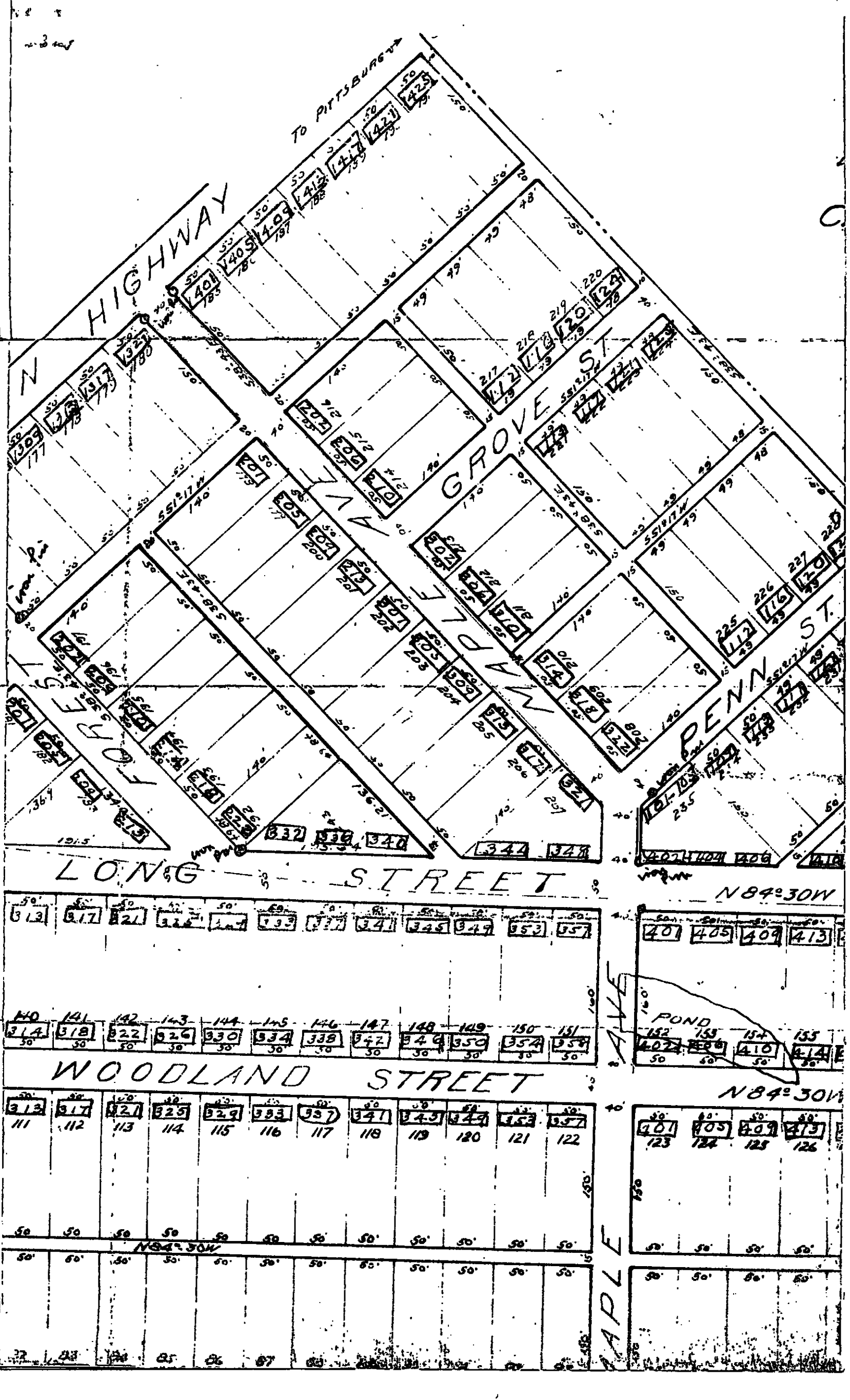
Ralph Fulton

By - RALPH FULTON

Chairman of the Board of Supervisors

ATTEST:

CHARLES R. SHARBAUGH
Secretary



2-3-108

TO PITTSBURGH

N HIGHWAY

GROVE ST

PENN ST

LONG STREET

N 84° 30' W

WOODLAND STREET

N 84° 30' W

POND

MAPLE AVE