

IN THE COURT OF QUARTER
SESSIONS OF CAMBRIA COUNTY,
PENNSYLVANIA.

NO. 3 JUNE SESSIONS 1955

Road Docket

Report in Duplicate, of
the Supervisors of the
Township of Susquehanna,
Cambria County, Pennsyl-
vania, in re: laying out,
opening and adoption of a
certain private road wholly
in the Township of Susque-
hanna, as a public road or
highway.

LAW OFFICES OF
WESTOVER & LANTZY
FIRST NATIONAL BANK BUILDING
SPANGLER, PENNSYLVANIA

Filed 4-25-55

Report in Duplicate of the
Supervisors of the Township of
Susquehanna, Cambria County,
Pennsylvania, in re: laying
out, opening and adoption of a
certain private road wholly in
the Township of Susquehanna,
as a public road or highway.

IN THE Court of Quarter Sessions
of Cambria County, Pennsylvania.
No. June Sessions, 1955

To the Clerk of Courts for the County of Cambria, Pennsylvania:

The Supervisors of the Township of Susquehanna, Cambria County, Pennsylvania, make the following report, together with a draft or survey of the road to be layed out and adopted as a public highway, with the width thereof and noting the improvements along the lines thereof, and the names of the owners of property abutting on said road or highway, filed in duplicate, in accordance with the Acts of Assembly in such case made and provided.

1. It is the judgment of the Supervisors of the Township of Susquehanna, that a public road or highway be ordained, surveyed layed out, opened and adopted as hereinafter described as a necessity for the public convenience.

2. The Supervisors of the Township of Susquehanna, therefore, report that they have unanimously decided to enact, ordain, survey, lay out, open and adopt the road appearing on the draft or survey hereto attached, tinted in green, which lies wholly within the Township of Susquehanna, to a width of thirty three feet, which width the Supervisors have determined will be sufficient for public use and travel, and upon said draft or survey, the Supervisors have caused to be noted the improvements along the lines of said public road or highway and the names of the owners of the properties which abut on said highway. This report and blue print have been filed in duplicate, with the Clerk of Courts for the County of Cambria in accordance with the Acts of Assembly of the Commonwealth of Pennsylvania in such case made and provided.

3. After the filing of this report and draft or survey with the Clerk of Courts for the County of Cambria, in duplicate, the Supervisors of the Township of Susquehanna will enact the necessary ordinance, enacting, ordaining, surveying, laying out,

opening and adopting the said road as a public road or highway, and the public road or highway as layed out, opened and adopted, is described as follows:

Beginning on the Southern right of way line of Highway Route #11062, at a point North 51 degrees no minutes West fifty feet from the Northeast corner of land of Susquehanna Township, said point being in the center line of the public road or highway herein described; thence by the center line of said public road or highway South 39 degrees no minutes West 163 feet to a post; thence by a curve to the west with a radius of two hundred feet, 87 feet to a post; thence by a curve to the East with a radius of 117 feet, a distance of 48 feet to another public road or highway between lots numbers 60 and 61 on the plan of lots of the Village of Emeigh.

In Witness Whereof, the Supervisors of the Township of Susquehanna, have signed and executed this report, in duplicate, this 21st day of April, A. D., 1955.

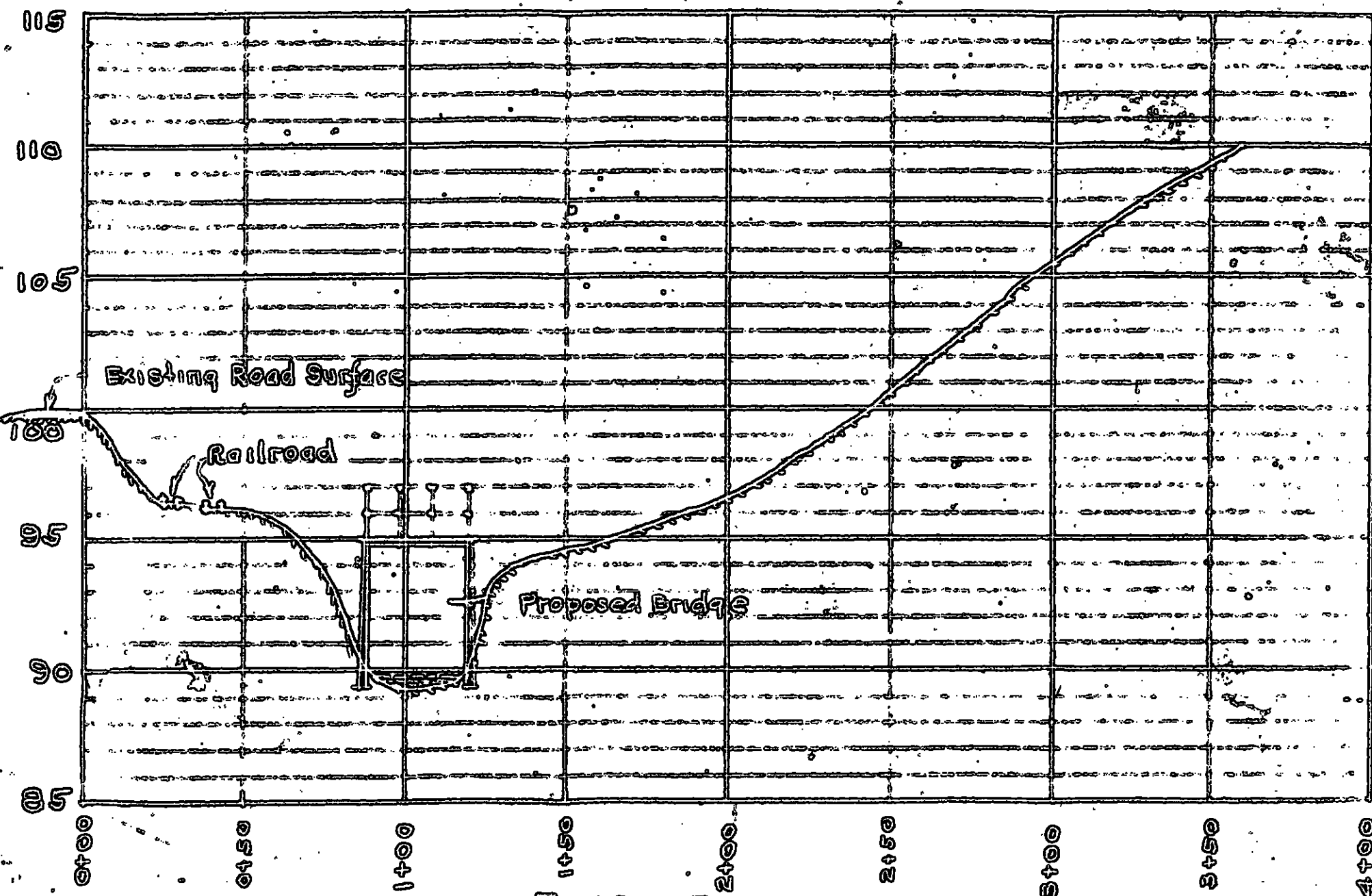
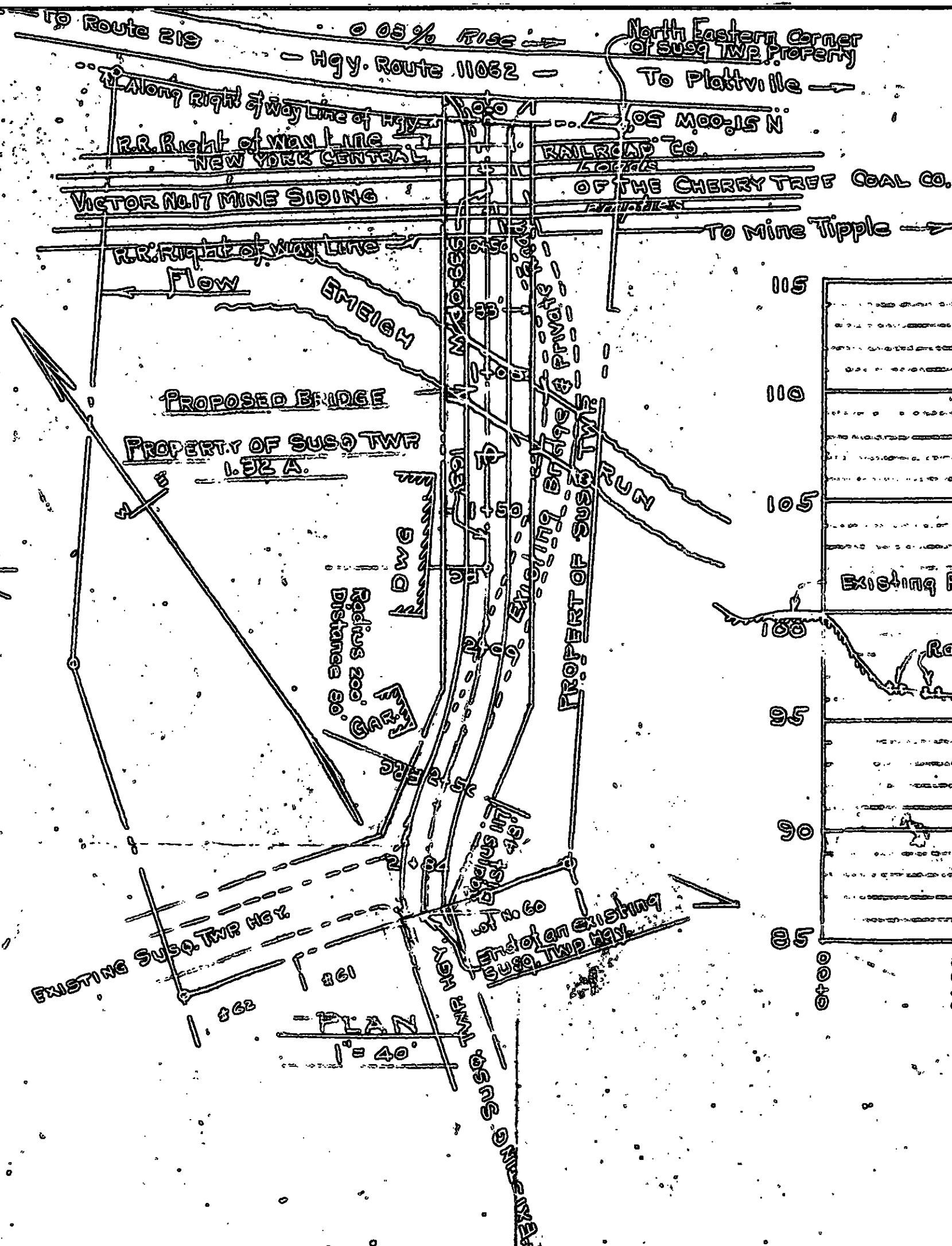
Stanley B. Bowers
Supervisor

Mike Byrnes
Supervisor

Alvin Byrnes
Supervisor

Rd. #3 June 1955

Not Microfilmed



PLAN & PROFILE
 OF PROPOSED GRADE CROSSING
 OVER THE
 NEW YORK CENTRAL RAILROAD SIDING
 LEADING TO
 VICTOR NO 17 MINE OF CHERRY TREE COAL CO.
 SITUATE IN
 THE VILLAGE OF EMEIGH
 TWP OF SUSQ. CAMBRIA COUNTY, PENNA.
 SURVEYED AUG 29, 1954.
 SCALE 1" = 40'
 Martin C. Kirsch, Engr
 Spangler, Penna.